

High Performance Blowers

TYPICAL APPLICATIONS

- Pressure management mattresses
- Large format printers
- Vacuum systems
- Low noise, high pressure applications

FEATURES

- 24 VDC, other voltages available
- AC input available
- Open collector tach output
- 0 - 5 V or PWM input speed control
- Internal or external drive electronics
- High efficiency 3-phase brushless DC motor
- Field oriented control for low torque ripple / low noise
- Optional external drive with direct access to Halls and phase leads

BENEFITS

- Low noise
- High efficiency
- Integrated electronics with customizable system interface
- Variable speed
- High power density
- High pressure
- Long life

AMP28



The AirMax™ P28 series of fans and blowers provide excellent output power per unit volume through the use of compact, high energy 3-phase brushless DC motors and efficient airfoil design. The motor utilizes high energy rare earth magnets to provide the blower with the necessary torque to provide maximum airflow in the minimum amount of system space.

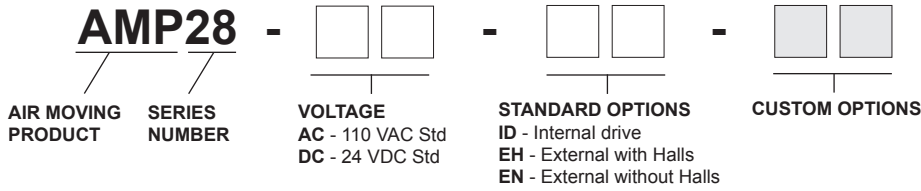
These high efficiency compact air movers use high reliability, long-life ball bearings with specially formulated lubrication to extend the life without the need to re-lubricate.

For more information about how this product can be tailored to fit your specific application, contact our applications engineers.

High Performance Blowers

SPECIFICATION AND NUMBERING SYSTEM

Part Numbering System Guide



Note: AC input with external drive is NOT an AC motor. It is a 150 VDC Brushless DC Motor / Permanent Magnet Synchronous Motor.

AMP28 Specifications

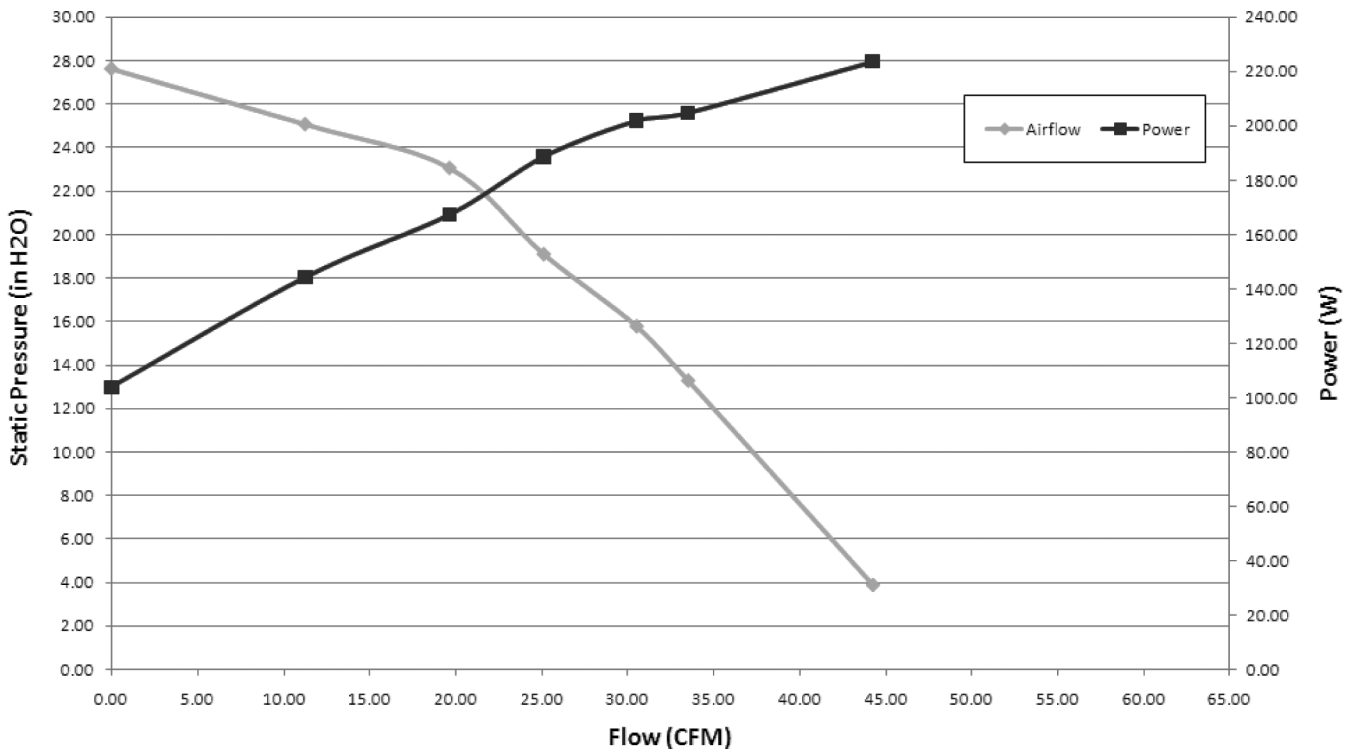
Part Number	Unit	AMP28-
Input Voltage	VDC	24*
Input Power		See Curve
Maximum Ambient Temperature	Degrees C	70
Weight	lbs / kg	1.3 / .59
Tach Out		Open Collector
Speed Control		Optional

* 24 VDC typical. Other voltages and AC input available upon request.

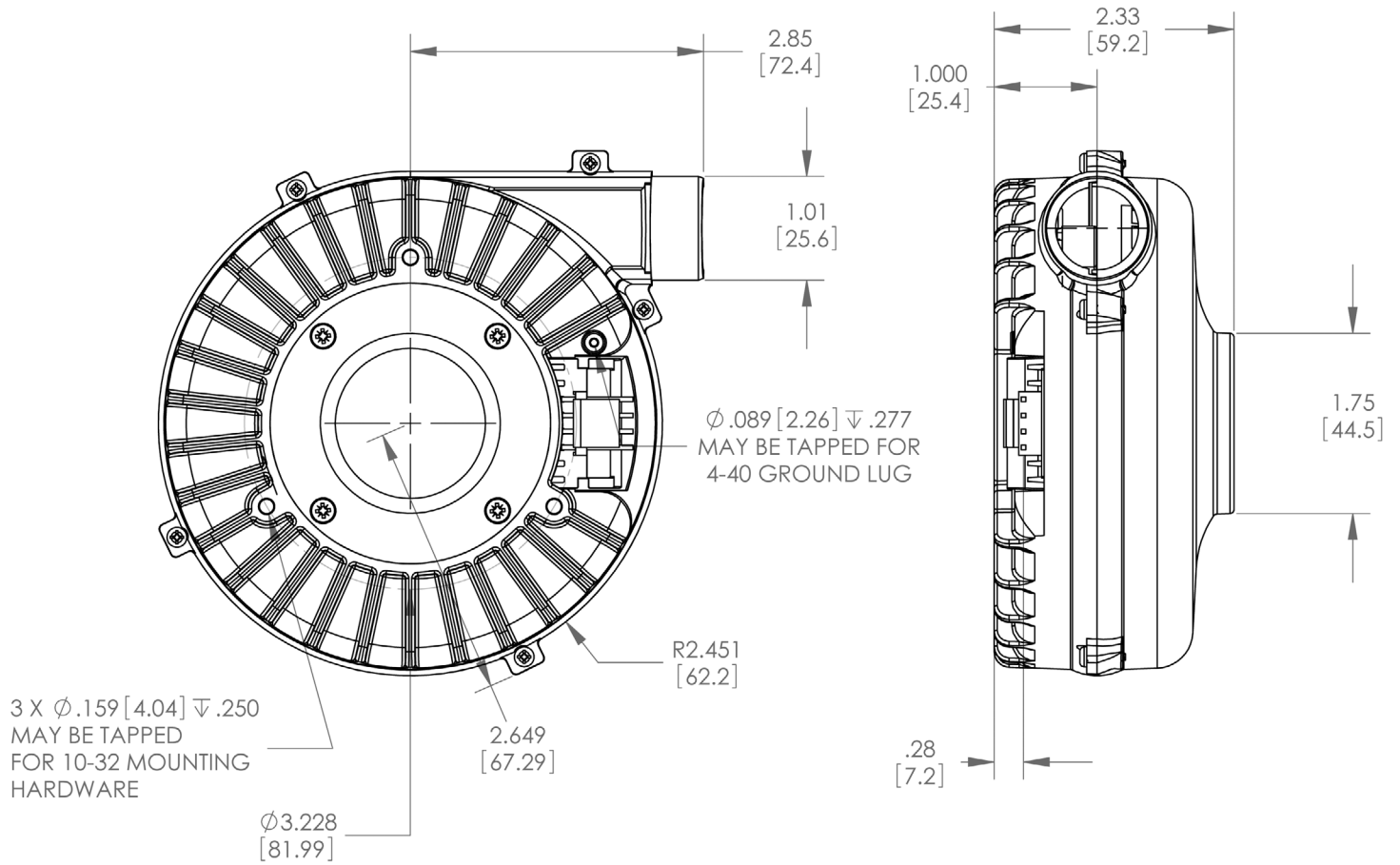
Timing Diagram for EH Option (4 Pole) CCW Rotation

DEGREES	ELEC												
	0	60	120	180	240	300	360	60	120	180	240	300	360
	MECH												
	0	30	60	90	120	150	180	210	240	270	300	330	360
S1 OUT													
S2 OUT													
S3 OUT													
A COIL	-	0	+	+	0	-	-	0	+	+	0	-	
B COIL	+	+	0	-	-	0	+	+	0	-	-	0	
C COIL	0	-	-	0	+	+	0	-	-	0	+	+	

AMP28 Performance Curves

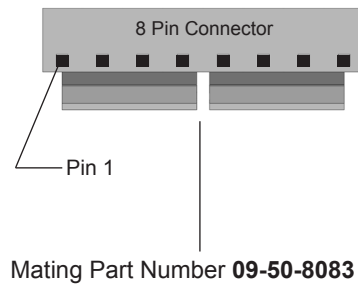
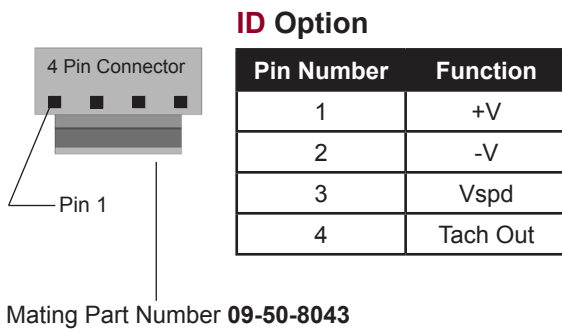


AMP28 Typical Outline



Dimensions are in inches (millimeters)

Pin Arrangements



Pin Number	Function
1	Phase C
2	Phase B
3	Phase A
4	Signal GND
5	Signal PWR
6	S1
7	S2
8	S3