



CUSTOMER APPLICATION

INFORMATION GUIDE

1 A,B,D,D

2 E,F

3 G,H,I,J

4 K,L

5 M,N

6 O,P,Q

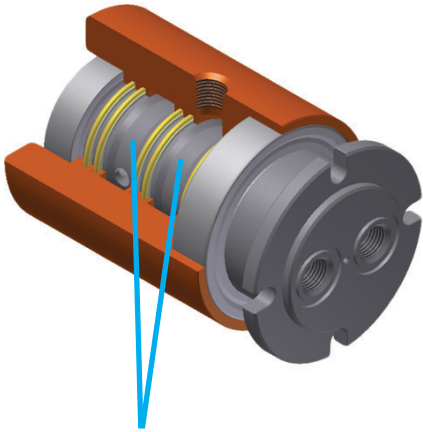
7 R,S,T,U,V

Last changed on:	Last changed by:	Revision	Page:
07/11/2011	Chris Larson	1.1	1 of 8

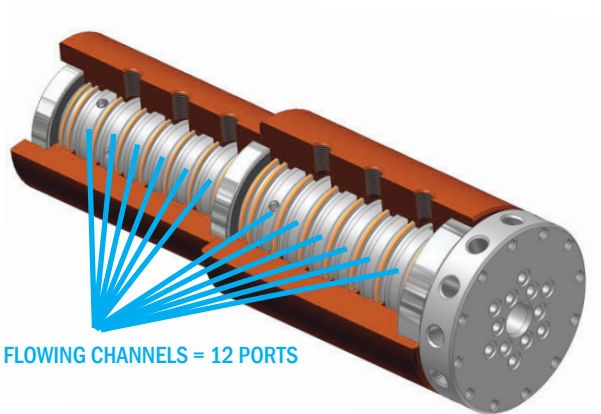
A

TOTAL NUMBER OF PORTS / PASSAGES

Number Of Ports = Number Of Independent Channels Or Flow Paths



2 INDEPENDENT FLOWING CHANNELS = 2 PORTS

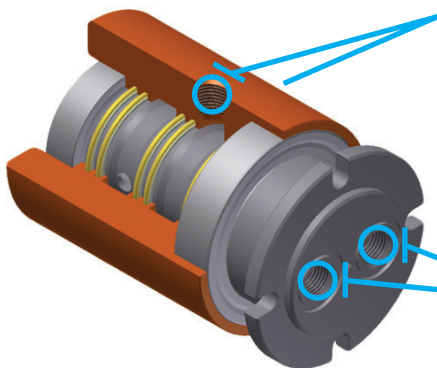


12 INDEPENDENT FLOWING CHANNELS = 12 PORTS

B

PORT / PASSAGE SIZE

What are requested diameters of each flow port/passages?



EXAMPLE:
 » PORT SIZE: 1.25 IN
 » QTY: 2
 » PRESSURE: 60 PSI

EXAMPLE:
 » PORT SIZE: 12MM
 » QTY: 2
 » PRESSURE: 10 BAR

C

QTY OF PORTS / PASSAGES

What is the quantity for each port size?

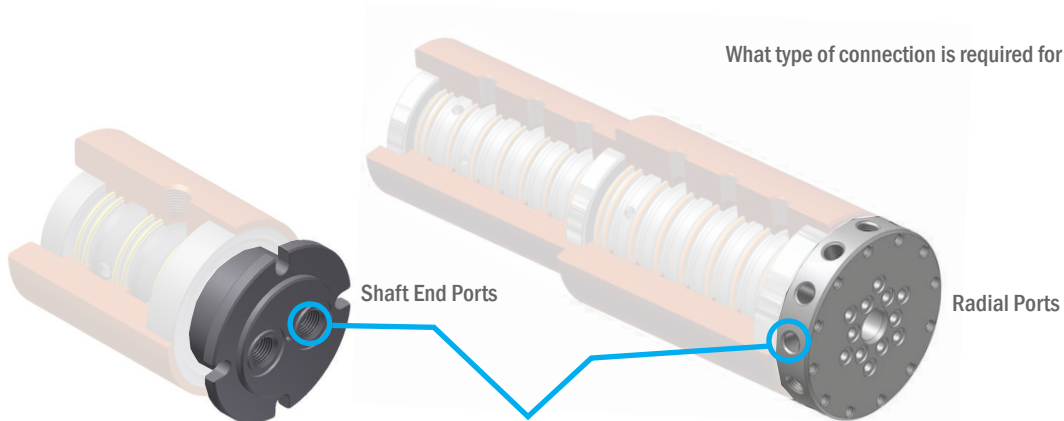
D

PRESSURE OF PORTS / PASSAGES

What are the pressure requirements for each port?

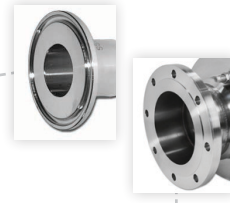
E SHAFT CONNECTION TYPE

What type of connection is required for the shaft?



EXAMPLES:

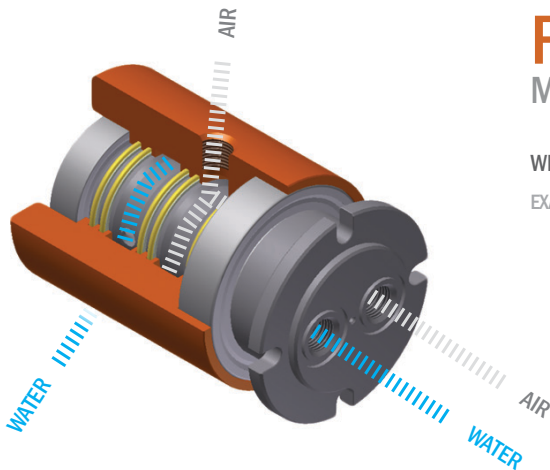
- » THREADED (E.G. NPT, SAE...)
- » O-RING FACE SEAL
- » FERRULE CONNECTION
- » FLANGE CONNECTION
- » CUSTOMER SPECIFIED CONNECTION



F MEDIA TYPE(S)

What type of media(s) will flow through each independent channel?

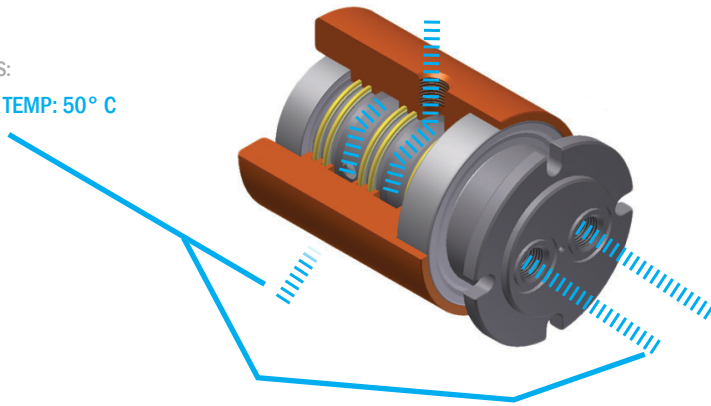
EXAMPLES: Chemical, Coolant, Cryogenics, Food-Grade, Gas, Mud, Oil, Steam, Water...



G MEDIA TEMP RANGE

What is the temperature range for the media passing through the rotary union?

EXAMPLES:
» MEDIA TEMP: 50° C



H MAXIMUM PRESSURE

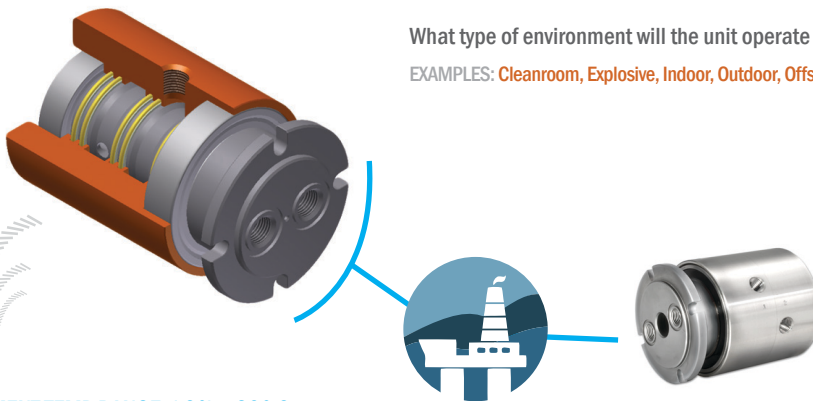
What are the maximum pressure requirements for the application?

EXAMPLE:
» MAX PRESSURE: 10 BAR

I ENVIRONMENT TYPE

What type of environment will the unit operate in?

EXAMPLES: Cleanroom, Explosive, Indoor, Outdoor, Offshore, Washdown, Atmosphere/Space...



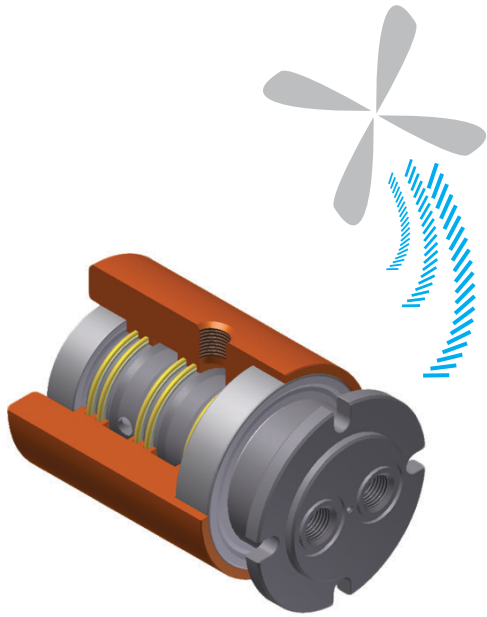
EXAMPLE:
» ENVIRONMENT TEMP RANGE: (-2°) - 30° C

The environment type will influence the types of materials used.

EXAMPLES:
» OFFSHORE
(All stainless steel construction for corrosion resistance against saltwater environment)

J ENVIRONMENT TEMP RANGE

What is the temperature range for the environment the unit will be used in?



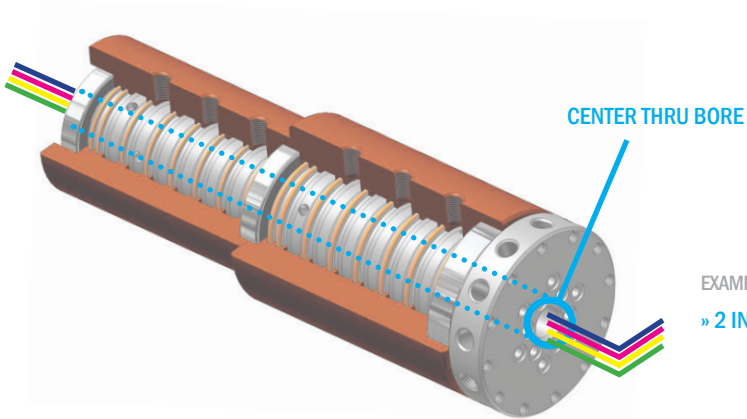
K External Cooling

Is there any external cooling required or available for the application?

EXAMPLES: Air Cooling, Water Cooling, Liquid Nitrogen Cooling...

L THRU BORE REQUIREMENTS

Are there any shaft thru bore requirements for the application?



EXAMPLE:

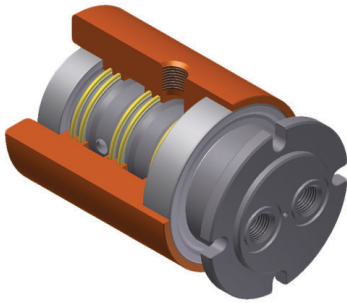
» 2 IN. THRU BORE REQUIRED FOR ELECTRICAL SLIP RING WIRES

M

MATERIAL REQUIREMENTS

Are there any specific materials requested / required for the application?

EXAMPLES: Brass, Aluminum, Stainless Steel, Compliant Materials



EXAMPLES:

» STAINLESS SHAFT / HOUSING & FDA COMPLIANT SEAL MATERIALS

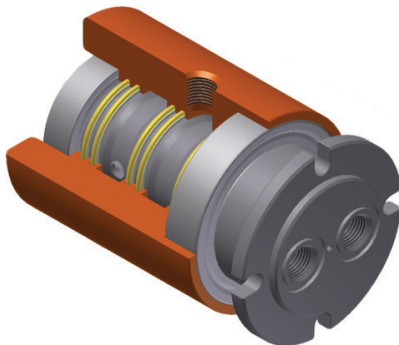
(Safety requirements for food processing application)

N

PLATING REQUIREMENTS

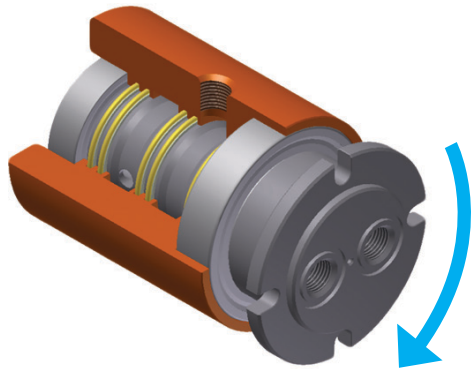
What type of customer-specific platings / coatings are required for the application?

EXAMPLES: Black Oxide, QPQ, TDC, E-Nickel, Ceramic, (Color) Anodizing...



EXAMPLES:

» HOUSING: ALUMINUM WITH ORANGE ANODIZE



O MAX TORQUE REQUIREMENTS

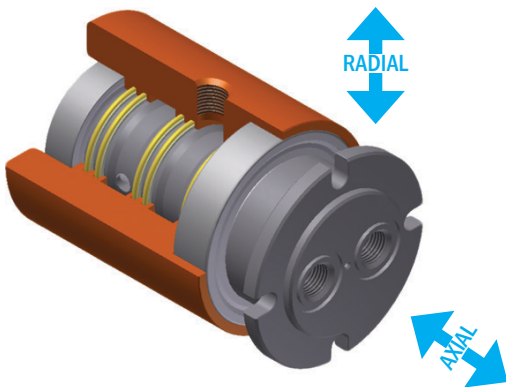
What is the maximum torque available to rotate?

EXAMPLES: 25 in lbs, 10 N m...

P MAXIMUM RADIAL LOADS

What is the maximum force / load applied perpendicular to the bearing axis of rotation?

EXAMPLES: 3,000 lbs, 1,500 kg...



Q MAXIMUM AXIAL LOADS

What is the maximum force / load applied along or parallel with the primary axis?

EXAMPLES: 3,000 lbs, 1,500 kg...

R

MIN LIFE REQUIREMENTS

Does the customer have any expectations or requirements regarding the amount of rotations / operating time for the units life?

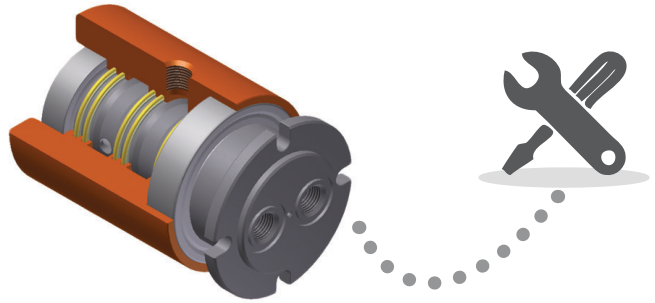
EXAMPLE: 3,000 Rotations

S

TESTING REQUIREMENTS

Are there any customer-specified testing requirements?

EXAMPLE: All ports pressurized to 1.5x max operating pressure



T

DELIVERY REQUIREMENTS

Does the customer need to receive the rotary union(s) by a certain date?

EXAMPLES: 8 weeks, 5 Months...

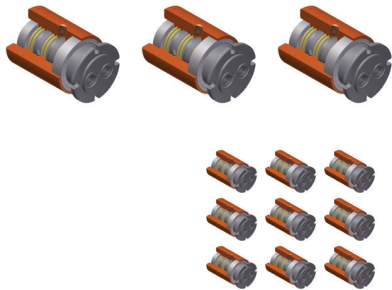


U

QUANTITIES TO QUOTE

How many individual units are requested?

EXAMPLES: 1, 50, 100...



V

ANNUAL USAGE

What is the estimated quantity required per year?

EXAMPLES: 25/year, 300/year...