

# NEW PART NUMBERS

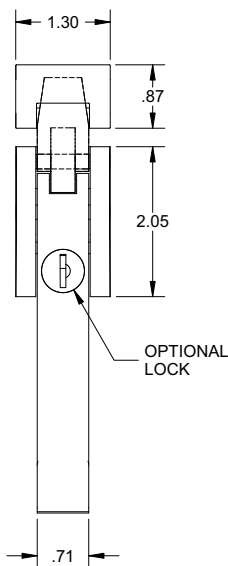
*The items in this section are not currently in our 2009 printed catalog.*

**We will be adding these items to the catalog on our next print version.**

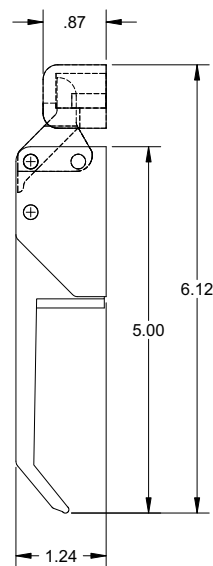
## COMPRESSION OVER-CENTER LEVER LATCH

| PART NUMBER | MATERIAL      | FINISH              | KEY CODE    |
|-------------|---------------|---------------------|-------------|
| 173         | Die Cast Zinc | Black Powder Coated | Non-Locking |
| 173LK       | Die Cast Zinc | Black Powder Coated | K03         |

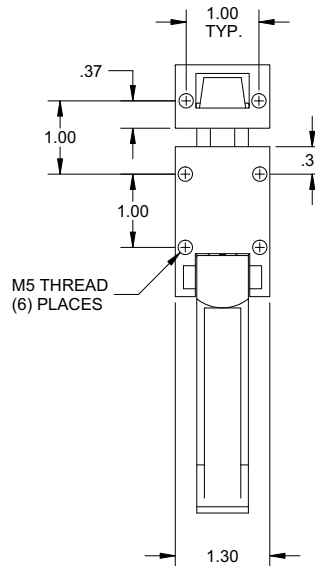
- Includes keeper and keys
- .38" stable compression for sealed door latching
- .31" unlatching feature for opening jammed sealed doors



FRONT VIEW



RIGHT SIDE VIEW



REAR VIEW

**NEW  
PRODUCT  
FAMILY**

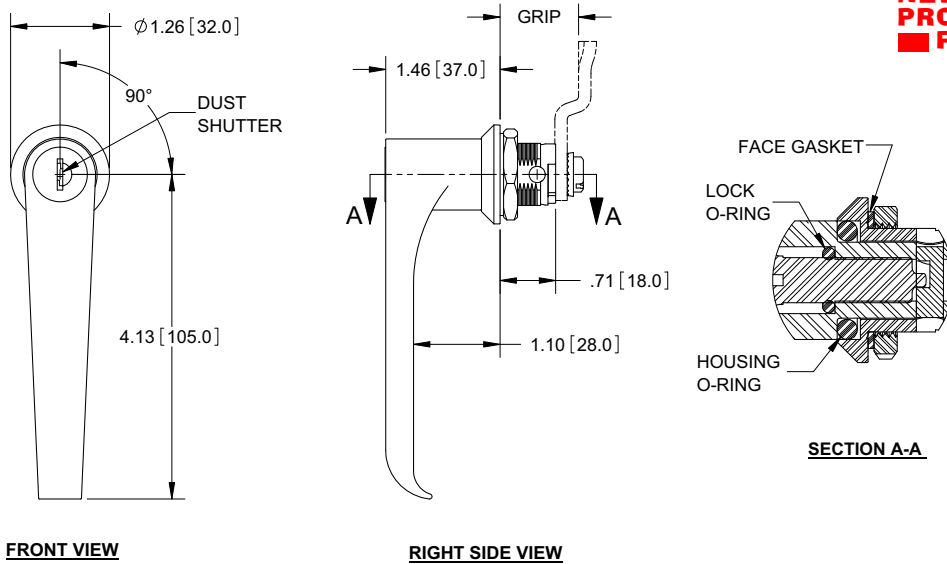


## LOCKING L-HANDLE QUARTER TURN LATCH

| PART NUMBER | L-HANDLE & HOUSING |                     |
|-------------|--------------------|---------------------|
|             | MATERIAL           | FINISH              |
| 41-11       | Die cast zinc      | Chrome              |
| 41-11BK     | Die cast zinc      | Black powder coated |

- Intended for NEMA type 4, 4X, & 12 enclosures
- Assembly includes body nut, cam retaining screw, and seals (two internal o-rings and a face gasket)
- Includes two ringed keys and stainless steel lock face and dust shutter

NOTE: Cams sold separately. See page 124 for cams & grip dimension



**NEW PRODUCT FAMILY**



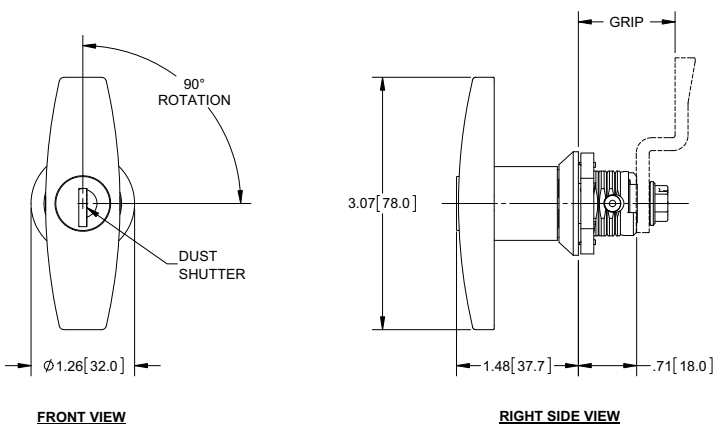
- HINGES, CONTINUOUS
- HINGES, SPRING
- HINGES, BUTT
- HINGES, LIFT-OFF
- HINGES, WELD-ON
- HINGES, STRAP & TEE
- LATCHES, MULTI-POINT
- TIE DOWNS & DOOR HOLDERS
- RV PRODUCTS
- RUBBER PRODUCTS
- NEMA & JIC
- L & T HANDLES

## T-HANDLE QUARTER TURN LATCH

| PART NUMBER | MATERIAL      |               | FINISH              |                     | LOCK        |
|-------------|---------------|---------------|---------------------|---------------------|-------------|
|             | T-HANDLE      | HOUSING       | T-HANDLE            | HOUSING             |             |
| 41-12P      | Plastic       | Die cast zinc | Black               | Black powder coated | Yes         |
| 41-13P      | Plastic       | Die cast zinc | Black               | Black powder coated | Non-locking |
| 41-12BK     | Die cast zinc | Die Cast zinc | Black powder coated | Black powder coated | Yes         |
| 41-13BK     | Die cast zinc | Die Cast zinc | Black powder coated | Black powder coated | Non-locking |

- Assembly includes body nut, cam retaining screw, and seals (one internal o-ring and a face gasket)
- Locking version includes two ringed keys

NOTE: Cams sold separately. See page 124 for cams & grip dimension



**NEW PRODUCT FAMILY**



- LATCHES, RECESSED
- LATCHES, PAWL
- LATCHES, COMPRESSION
- LATCHES, DRAW
- LATCHES, BOLT
- HASPS & STAPLES
- PULLS & KNOBS
- HANDLES, CHEST
- CAM LOCKS & ACCESSORIES
- MISC. PRODUCTS
- INDEX

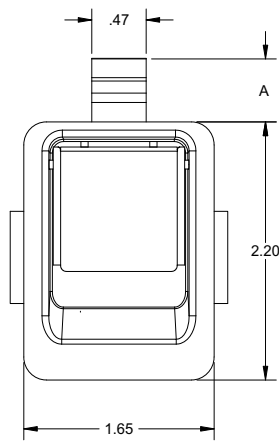
# NEW PART NUMBERS

## STAINLESS STEEL MINIATURE PADDLE HANDLE WITH BRUSHED FINISH

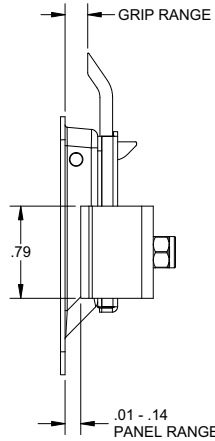
**NEW  
PRODUCT  
FAMILY**

| PART NUMBER | GRIP RANGE (MIN. - MAX.) | A          | CUT-OUT DIM. B (MIN. - MAX.) |
|-------------|--------------------------|------------|------------------------------|
| 454SS01     | .05 [1.2] - .08 [2.0]    | .45 [11.5] | .41 [10.4] - .50 [12.7]      |
| 454SS02     | .08 [2.0] - .11 [2.8]    | .47 [11.9] | .44 [11.2] - .53 [13.5]      |
| 454SS03     | .11 [2.8] - .14 [3.6]    | .48 [12.0] | .47 [11.9] - .56 [14.2]      |
| 454SS       | .14 [3.6] - .16 [4.1]    | .53 [13.5] | .35 [9.0] - .39 [10.0]       |

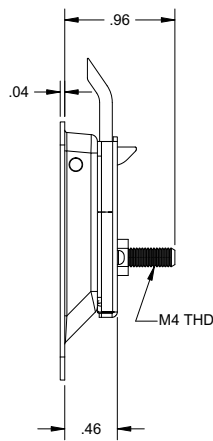
- Low profile design
- Includes mounting bracket and nylon lock nut



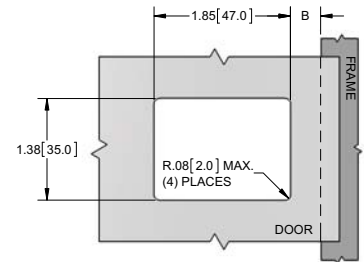
FRONT VIEW  
WITH MOUNTING BRACKET



RIGHT SIDE VIEW  
WITH MOUNTING BRACKET



RIGHT SIDE VIEW  
WITHOUT MOUNTING BRACKET



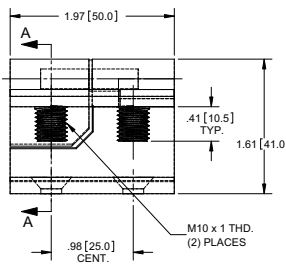
CUT-OUT DIMENSIONS

## CAST RIGHT HAND LIFT-OFF HINGE WITH THREADED STUDS

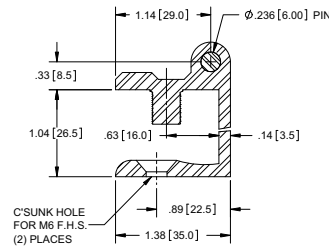
| PART NUMBER | MATERIAL      | FINISH              |
|-------------|---------------|---------------------|
| H2070RH     | Die Cast Zinc | Black Powder Coated |

- Brass bushing
- Steel, nickel plated pin

**NEW**



FRONT VIEW



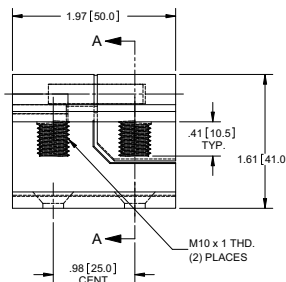
SECTION A-A

## CAST LEFT HAND LIFT-OFF HINGE WITH THREADED STUDS

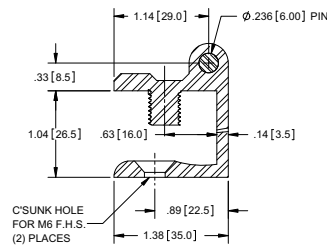
| PART NUMBER | MATERIAL      | FINISH              |
|-------------|---------------|---------------------|
| H2070LH     | Die Cast Zinc | Black Powder Coated |

- Brass bushing
- Steel, nickel plated pin

**NEW**



FRONT VIEW

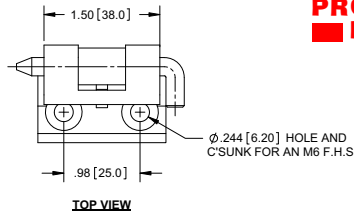


SECTION A-A

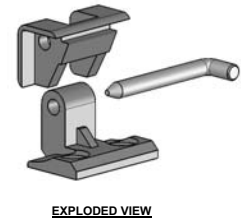
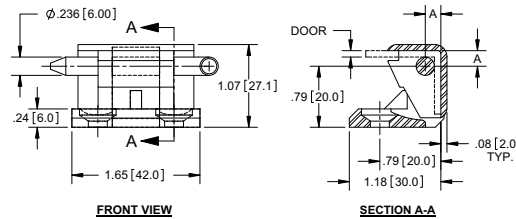
## CAST TAKE-APART ENCLOSURE HINGE

| PART NUMBER | MATERIAL      | DOOR      | DIM. A |
|-------------|---------------|-----------|--------|
| H2071●      | Die Cast Zinc | 2mm thick | 5.1mm  |
| H2071-01    | Die Cast Zinc | 3mm thick | 6.1mm  |

- Black powder coated leaves
- Steel, nickel plated pin
- Indicates stock items



**NEW PRODUCT FAMILY**

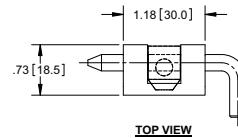


- HINGES, CONTINUOUS
- HINGES, SPRING
- HINGES, BUTT
- HINGES, LIFT-OFF
- HINGES, WELD-ON
- HINGES, STRAP & TEE
- LATCHES, MULTI-POINT
- TIE DOWNS & DOOR HOLDERS

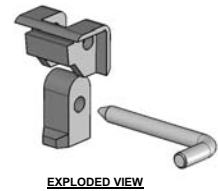
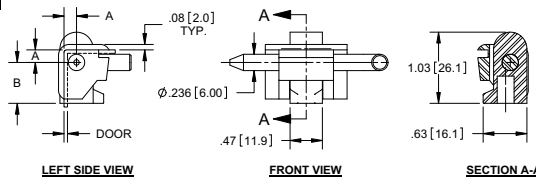
## CAST TAKE-APART ENCLOSURE HINGE

| PART NUMBER | MATERIAL      | DOOR        | DIM. A | DIM. B |
|-------------|---------------|-------------|--------|--------|
| H2074●      | Die Cast Zinc | 1.5mm thick | 4.6mm  | 15mm   |
| H2074-01    | Die Cast Zinc | 2mm thick   | 5.1mm  | 15mm   |
| H2074-02    | Die Cast Zinc | 1.5mm thick | 4.6mm  | 17mm   |
| H2074-03    | Die Cast Zinc | 2mm thick   | 5.1mm  | 17mm   |
| H2074-04    | Die Cast Zinc | 1.5mm thick | 4.6mm  | 19mm   |
| H2074-05    | Die Cast Zinc | 2mm thick   | 5.1mm  | 19mm   |

- Black powder coated leaves
- Steel, nickel plated pin
- Indicates stock items



**NEW PRODUCT FAMILY**

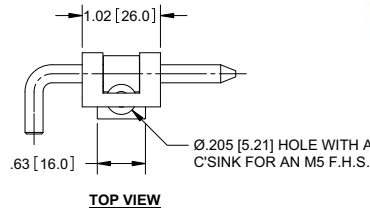


- RV PRODUCTS
- RUBBER PRODUCTS
- NEMA & JIC
- L & T HANDLES
- LATCHES, RECESSED
- LATCHES, PAWL

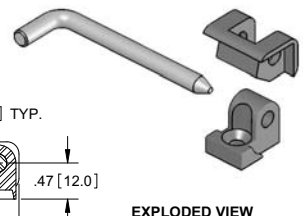
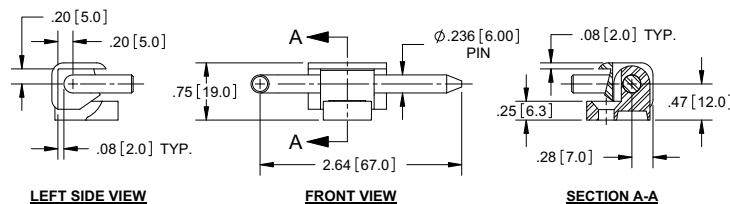
## CAST TAKE-APART ENCLOSURE HINGE

| PART NUMBER | MATERIAL      | FINISH              |
|-------------|---------------|---------------------|
| H2077●      | Die Cast Zinc | Black Powder Coated |

- Steel, nickel plated pin
- Indicates stock items



**NEW**



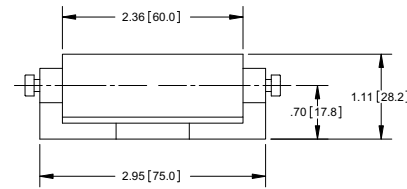
- LATCHES, COMPRESSION
- LATCHES, DRAW
- LATCHES, BOLT
- HASPS & STAPLES
- PULLS & KNOBS
- HANDLES, CHEST
- CAM LOCKS & ACCESSORIES
- MISC. PRODUCTS
- INDEX

# NEW PART NUMBERS

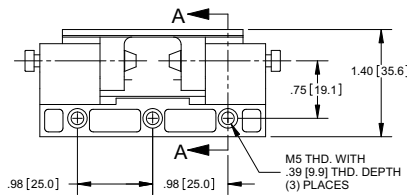
## CAST TAKE-APART ENCLOSURE HINGE

| PART NUMBER | MATERIAL      | FINISH              |
|-------------|---------------|---------------------|
| H2075       | Die Cast Zinc | Black Powder Coated |

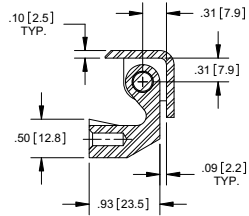
- Steel, zinc plated pins



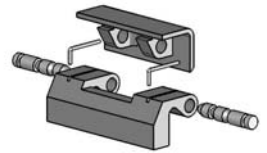
TOP VIEW



FRONT VIEW



SECTION A-A



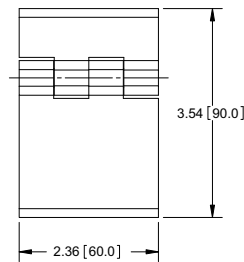
EXPLODED VIEW

**NEW**

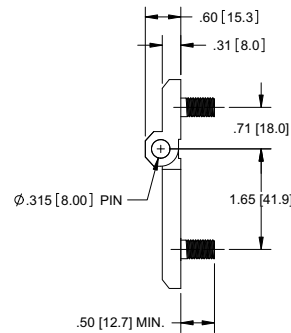
## CAST BUTT HINGE WITH THREADED STUDS

| PART NUMBER | MATERIAL      | FINISH              |
|-------------|---------------|---------------------|
| H2072       | Die Cast Zinc | Black Powder Coated |

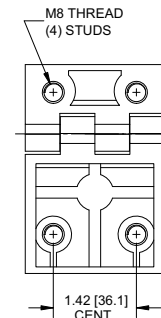
- Steel, nickel plated threaded studs
- Steel, nickel plated pin



FRONT VIEW



RIGHT SIDE VIEW



REAR VIEW

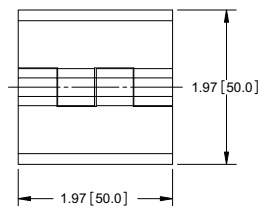
**NEW**



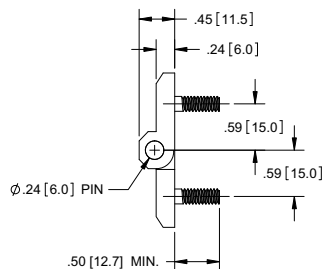
## CAST BUTT HINGE WITH THREADED STUDS

| PART NUMBER | MATERIAL      | FINISH              |
|-------------|---------------|---------------------|
| H2073       | Die Cast Zinc | Black Powder Coated |

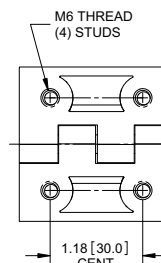
- Steel, nickel plated threaded studs
- Steel, nickel plated pin



FRONT VIEW



RIGH SIDE VIEW



REAR VIEW

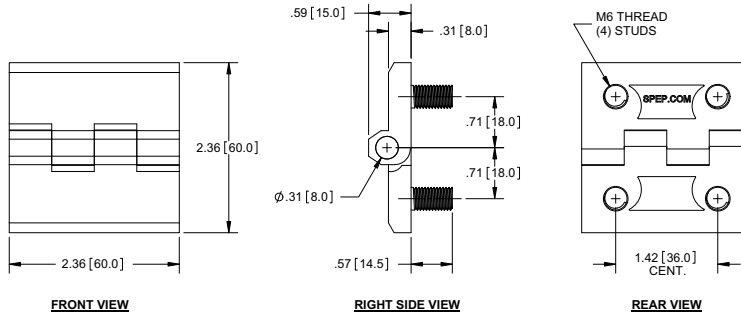
**NEW**



## CAST BUTT HINGE WITH THREADED STUDS

| PART NUMBER | MATERIAL      | FINISH              |
|-------------|---------------|---------------------|
| H2073-01    | Die Cast Zinc | Black Powder Coated |

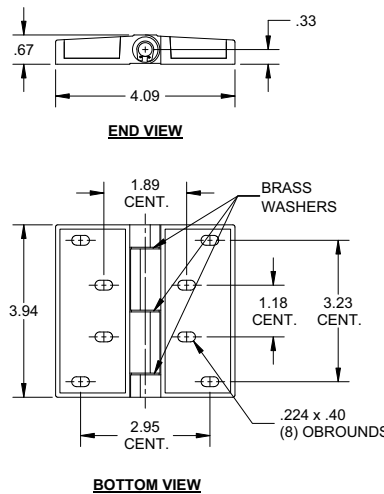
- Stainless steel threaded studs
- Stainless steel pin



## CAST ENCLOSURE HINGE WITH FASTENER COVERS

| PART NUMBER | MATERIAL      | FINISH        |
|-------------|---------------|---------------|
| H2076       | Die Cast Zinc | Chrome Plated |

- Stainless steel pin
- (2) stainless steel covers
- (3) brass washers
- (2) retaining rings



**NEW**

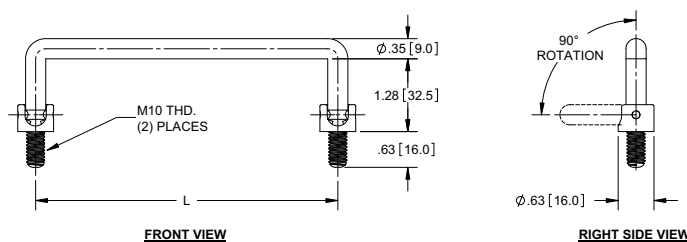


## STEEL, CHROME PLATED WIRE HANDLE

| PART NUMBER | L IN [MM]  |
|-------------|------------|
| 935-01      | 3.54 [90]  |
| 935-02●     | 3.94 [100] |
| 935-03      | 4.69 [119] |
| 935-04●     | 5.32 [135] |
| 935-05      | 5.87 [149] |
| 935-06      | 6.10 [155] |
| 935-07      | 6.30 [160] |

- Steel, chrome plated handle
- (2) steel, chrome plated washers
- (2) steel, chrome plated nuts
- Indicates stock items

**NEW PRODUCT FAMILY**



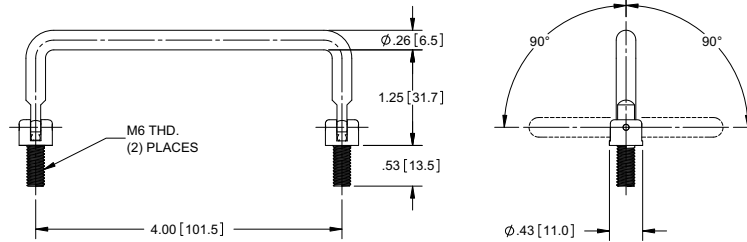
- HINGES, CONTINUOUS
- HINGES, SPRING
- HINGES, BUTT
- HINGES, LIFT-OFF
- HINGES, WELD-ON
- HINGES, STRAP & TEE
- LATCHES, MULTI-POINT
- TIE DOWNS & DOOR HOLDERS
- RV PRODUCTS
- RUBBER PRODUCTS
- NEMA & JIC
- L & T HANDLES
- LATCHES, RECESSED
- LATCHES, PAWL
- LATCHES, COMPRESSION
- LATCHES, DRAW
- LATCHES, BOLT
- HASPS & STAPLES
- PULLS & KNOBS
- HANDLES, CHEST
- CAM LOCKS & ACCESSORIES
- MISC. PRODUCTS
- INDEX

# NEW PART NUMBERS

## STEEL, BLACK POWDER COATED WIRE HANDLE

| PART NUMBER | DESCRIPTION          |
|-------------|----------------------|
| 933         | 4.00 [101.5] Centers |

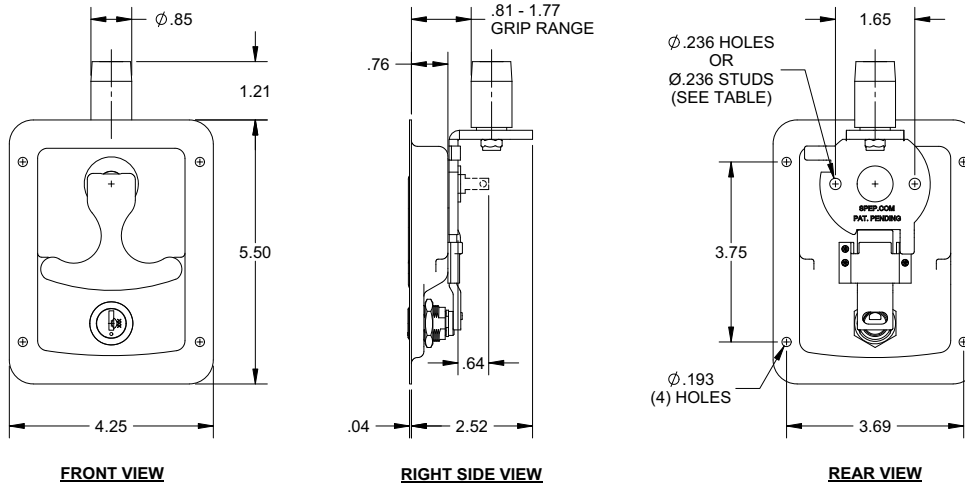
- Steel, black powder coated handle
- (2) steel, black powder coated nuts



## SINGLE POINT FOLDING T-HANDLE WITH NYLON CAM ROLLER

| PART NUMBER | MATERIAL        | FINISH        | LOCKING | KEY CODES  | HOLES/STUDS |
|-------------|-----------------|---------------|---------|------------|-------------|
| 479-KD      | Stainless Steel | Polished Face | Yes     | 001 to 025 | Holes       |
| 489-KD      | Stainless Steel | Polished Face | Yes     | 001 to 025 | Studs       |

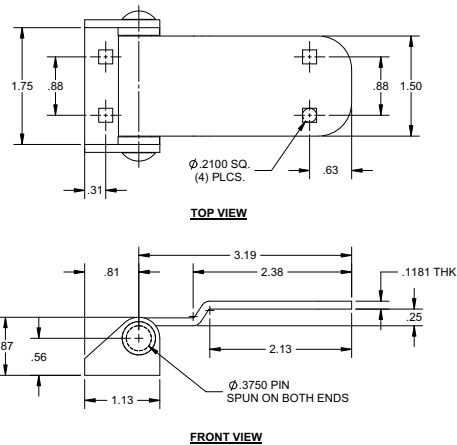
**NEW PRODUCT FAMILY**



## STAINLESS STEEL OFFSET STRAP HINGE

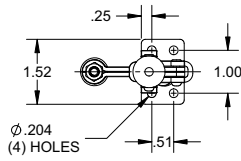
| PART NUMBER | FINISH          | PIN                                       |
|-------------|-----------------|-------------------------------------------|
| H1081SS     | Electropolished | Spun ends, non-removable, stainless steel |

- Stainless steel washers

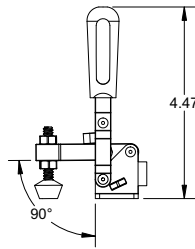


## ADJUSTABLE HOLD-DOWN TOGGLE CLAMP

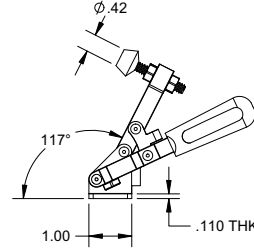
| PART NUMBER | MATERIAL        | FINISH        |
|-------------|-----------------|---------------|
| J3108SS     | Stainless Steel | Mill/Red Grip |



TOP VIEW



LATCHED END VIEW



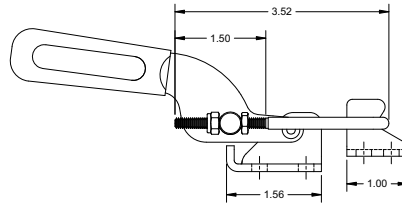
UNLATCHED END VIEW

**NEW**

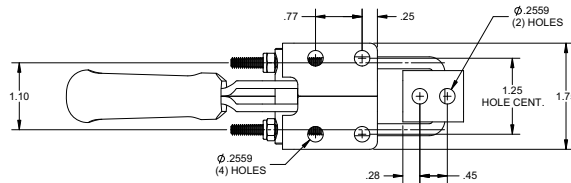


## ADJUSTABLE OVER-CENTER TOGGLE CLAMP

| PART NUMBER | MATERIAL        | FINISH        |
|-------------|-----------------|---------------|
| J3109       | Stainless Steel | Mill/Red Grip |



FRONT VIEW



BOTTOM VIEW

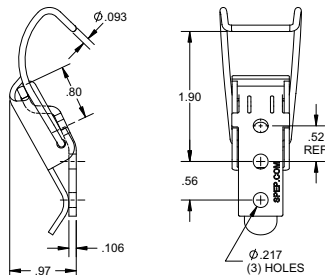
**NEW**



## PULL DOWN LATCH WITH SPRING HOOK LOOP WIRE BAIL

| PART NO. | MOUNTING HOLES | MATERIAL | FINISH      |
|----------|----------------|----------|-------------|
| 2052ZN   | Yes            | Steel    | Zinc Plated |

■ May be used without keeper



**NEW**



HINGES, CONTINUOUS

HINGES, SPRING

HINGES, BUTT

HINGES, LIFT-OFF

HINGES, WELD-ON

HINGES, STRAP & TEE

LATCHES, MULTI-POINT

TIE DOWNS & DOOR HOLDERS

RV PRODUCTS

RUBBER PRODUCTS

NEMA & JIC

L & T HANDLES

LATCHES, RECESSED

LATCHES, PAWL

LATCHES, COMPRESSION

LATCHES, DRAW

LATCHES, BOLT

HASPS & STAPLES

PULLS & KNOBS

HANDLES, CHEST

CAM LOCKS & ACCESSORIES

MISC. PRODUCTS

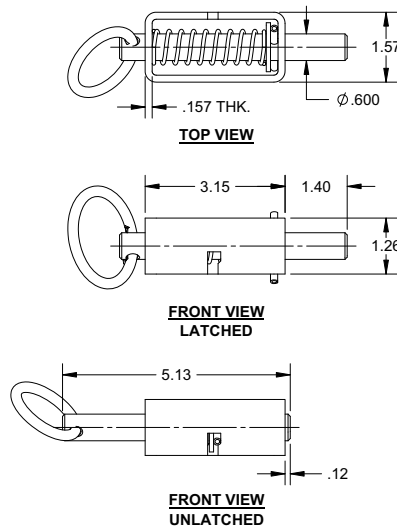
INDEX

# NEW PART NUMBERS

## BOLT LATCH WITH PULL RING

| PART NUMBER | MATERIAL | FINISH      |
|-------------|----------|-------------|
| 1159        | Steel    | Zinc Plated |

- Ø.600 steel bolt



**NEW**



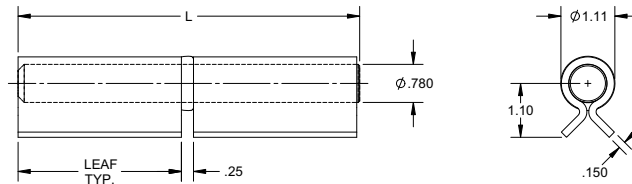
## WINGED BARREL HINGE

| PART NUMBER | LENGTH L | LEAF  | MATERIAL | FINISH       |
|-------------|----------|-------|----------|--------------|
| W435        | 7.0"     | 3.35" | Steel    | Clear Coated |
| W436        | 3.5"     | 1.57" | Steel    | Clear Coated |

**NEW PRODUCT FAMILY**



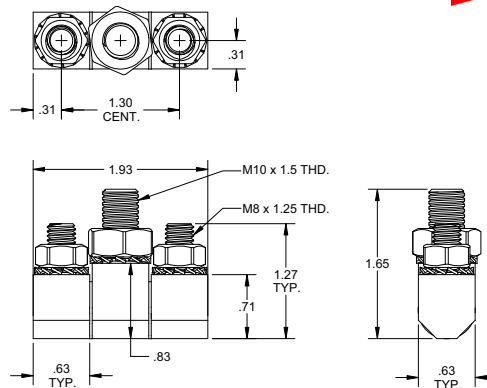
- Stainless steel axial ball bearing



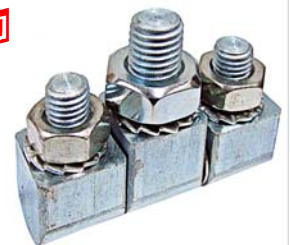
## CARBON STEEL HINGE BLOCK WITH THREADED STUDS

| PART NUMBER | MATERIAL     | FINISH      |
|-------------|--------------|-------------|
| H2004-01    | Carbon Steel | Zinc Plated |

- Components material: steel, zinc plated except for stainless steel pin
- Included components;
  - (1) M10 x 1.5 nut
  - (1) M10 external serrated washer
  - (2) M8 x 1.25 nuts
  - (2) M8 external serrated washers
  - (2) M8 belleville washers
  - (1) Ø.314 stainless steel removable pin



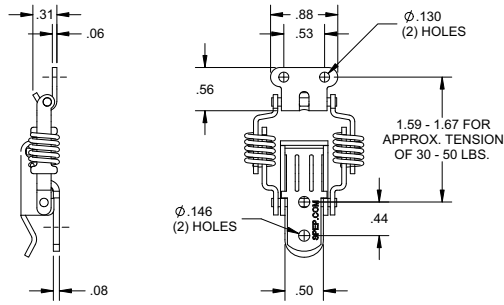
**NEW**



# NEW PART NUMBERS

## SMALL COMPRESSION PULL DOWN CATCH

| PART NUMBER | MATERIAL        | FINISH          |
|-------------|-----------------|-----------------|
| 2053ZN      | Steel           | Zinc Plated     |
| 2053SS      | Stainless Steel | Electropolished |



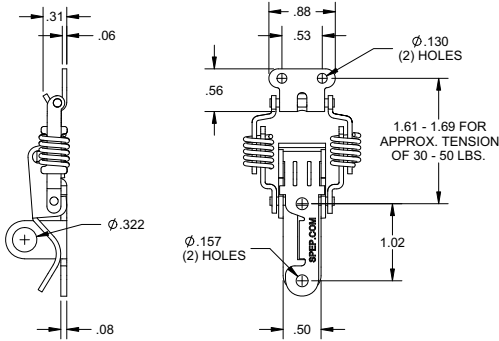
**NEW**



- HINGES, CONTINUOUS
- HINGES, SPRING
- HINGES, BUTT
- HINGES, LIFT-OFF
- HINGES, WELD-ON

## SMALL COMPRESSION PULL DOWN CATCH WITH PADLOCK EYE

| PART NUMBER | MATERIAL        | FINISH          |
|-------------|-----------------|-----------------|
| 2054ZN      | Steel           | Zinc Plated     |
| 2054SS      | Stainless Steel | Electropolished |



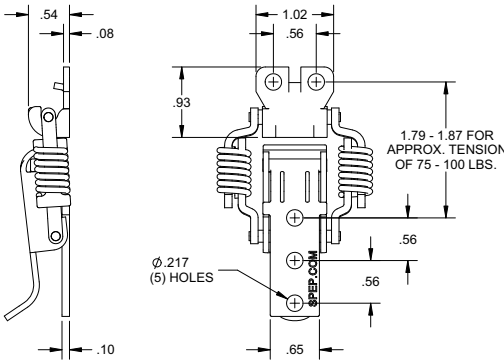
**NEW**



- HINGES, STRAP & TEE
- LATCHES, MULTI-POINT
- TIE DOWNS & DOOR HOLDERS
- RV PRODUCTS
- RUBBER PRODUCTS
- NEMA & JIC

## LARGE COMPRESSION PULL DOWN CATCH

| PART NUMBER | MATERIAL        | FINISH          |
|-------------|-----------------|-----------------|
| 2055ZN      | Steel           | Zinc Plated     |
| 2055SS      | Stainless Steel | Electropolished |



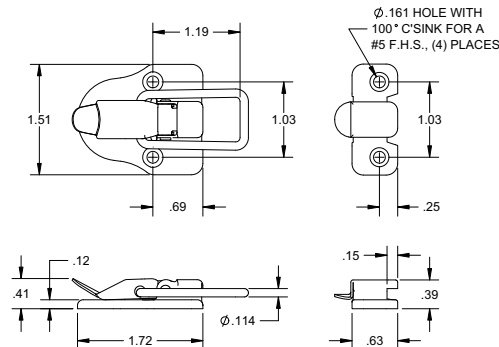
**NEW**



- L & T HANDLES
- LATCHES, RECESSED
- LATCHES, PAWL
- LATCHES, COMPRESSION
- LATCHES, DRAW
- LATCHES, BOLT

## STAMPED PADLOCKABLE OVER CENTER LATCH

| PART NUMBER | MATERIAL | FINISH        |
|-------------|----------|---------------|
| 2051        | Steel    | Nickel Plated |



**NEW**



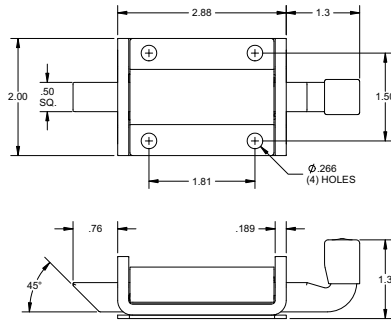
- HASPS & STAPLES
- PULLS & KNOBS
- HANDLES, CHEST
- CAM LOCKS & ACCESSORIES
- MISC. PRODUCTS
- INDEX

# NEW PART NUMBERS

## SLAM LATCH

| PART NUMBER | MATERIAL | FINISH      |
|-------------|----------|-------------|
| 1195ZN      | Steel    | Zinc Plated |

- Vinyl end cap



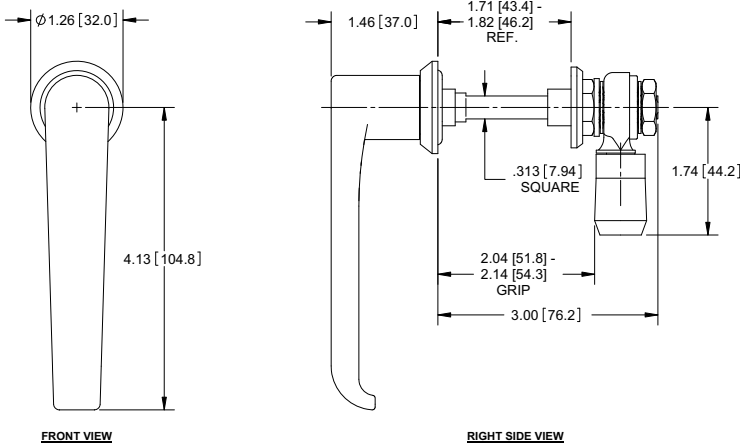
**NEW**



## PLASTIC L HANDLE LATCH WITH ROLLER CAM

| PART NUMBER | ROTATION 360°  | SHAFT STYLE | SHAFT LENGTH | LOCKING | FINISH          |
|-------------|----------------|-------------|--------------|---------|-----------------|
| 1157-01     | Bi-directional | Threaded    | 3.00         | No      | Black, Textured |

- Handle includes o-rings
- Made from glass reinforced plastic with UV inhibitors
- Includes roller cam
- Grip range between 2.04" to 2.14"



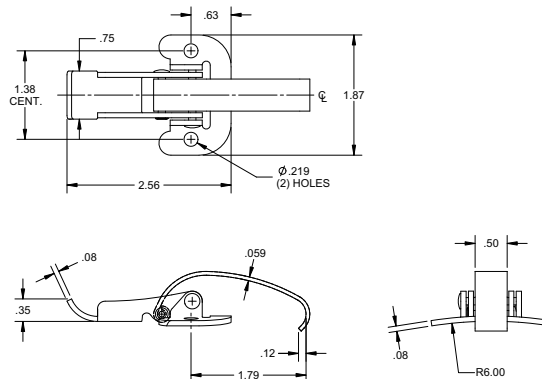
**NEW**



## OVER CENTER LATCH WITH A RADIUSED BASE

| PART NUMBER | MATERIAL | FINISH      |
|-------------|----------|-------------|
| 214-02      | CRS      | Zinc Plated |

- Latch has reversed lever



**NEW**



# NEW PART NUMBERS

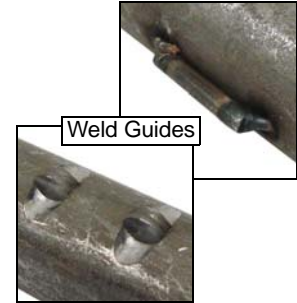
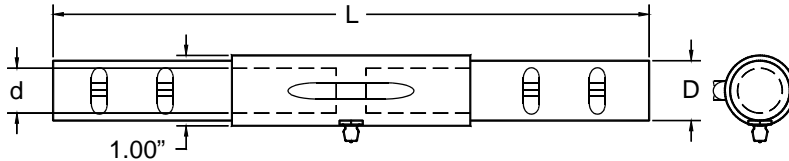
## THREE PIECE BARREL HINGES WITH WELD GUIDES

| PART NUMBER | LENGTH L | BODY DIA D | PIN DIA d | MATERIAL |
|-------------|----------|------------|-----------|----------|
| W412SK      | 10.00    | .969       | .75       | Steel    |
| W413SK      | 12.00    | .969       | .75       | Steel    |

- Steel grease fitting in the middle
- Weld guides assist for positioning and alignment



**NEW PRODUCT FAMILY**



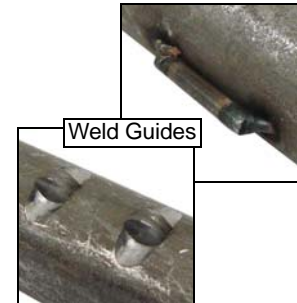
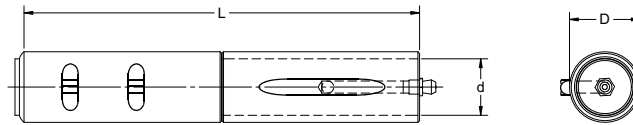
## TWO PIECE BARREL HINGES WITH WELD GUIDES

| PART NUMBER | LENGTH L | BODY DIA D | PIN DIA d | MATERIAL |
|-------------|----------|------------|-----------|----------|
| W430SK      | 4.00     | 1.00       | .75       | Steel    |

- Steel grease fitting
- Weld guides assist for positioning and alignment



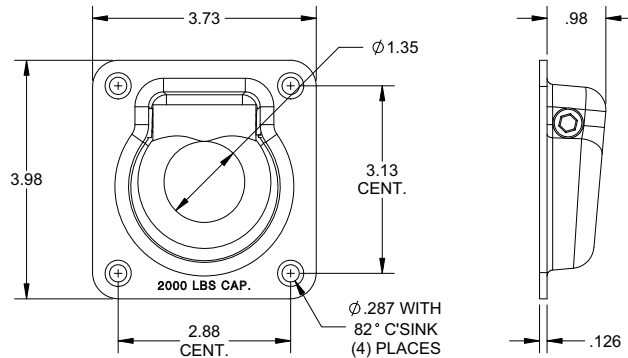
**NEW**



## 2000 LB TIE DOWN RING

| PART NUMBER | MATERIAL        | FINISH      |
|-------------|-----------------|-------------|
| 891ZN       | Steel           | Zinc Plated |
| 891SS       | Stainless Steel | Mill        |

- $\varnothing$ .433" thick ring
- .126" thick base
- 2,000 lb. rated



**NEW PRODUCT FAMILY**



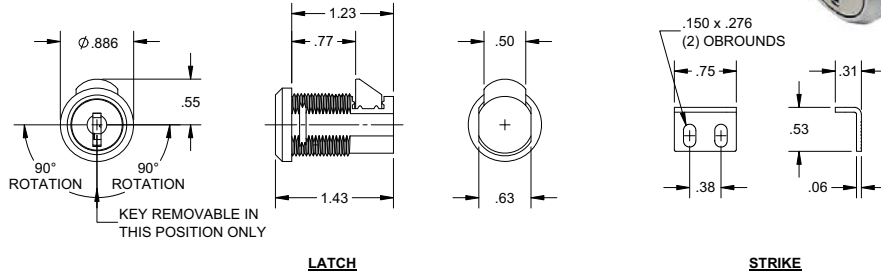
- HINGES, CONTINUOUS
- HINGES, SPRING
- HINGES, BUTT
- HINGES, LIFT-OFF
- HINGES, WELD-ON
- HINGES, STRAP & TEE
- LATCHES, MULTI-POINT
- TIE DOWNS & DOOR HOLDERS
- RV PRODUCTS
- RUBBER PRODUCTS
- NEMA & JIC
- L & T HANDLES
- LATCHES, RECESSED
- LATCHES, PAWL
- LATCHES, COMPRESSION
- LATCHES, DRAW
- LATCHES, BOLT
- HASPS & STAPLES
- PULLS & KNOBS
- HANDLES, CHEST
- CAM LOCKS & ACCESSORIES
- MISC. PRODUCTS
- INDEX

# NEW PART NUMBERS

## KEY-LOCKING BOLT LATCH

| PART NUMBER | DESCRIPTION |
|-------------|-------------|
| 2-15CH      | Key-locking |

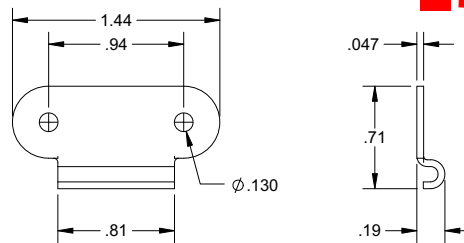
- Material: Die cast zinc
- Finish: Chrome plated
- All latches include:
  - Body nut
  - Strike in steel, zinc plated
  - (2) ringed keys, key code CH751
- Spring clip mounting also available (non-stock)



## SMALL 90° ANGLE KEEPER

| PART NUMBER | MATERIAL        | FINISH      |
|-------------|-----------------|-------------|
| 209107      | Steel           | Zinc Plated |
| 209107SS    | Stainless Steel | Tumbled     |

- Mounted perpendicular to latch



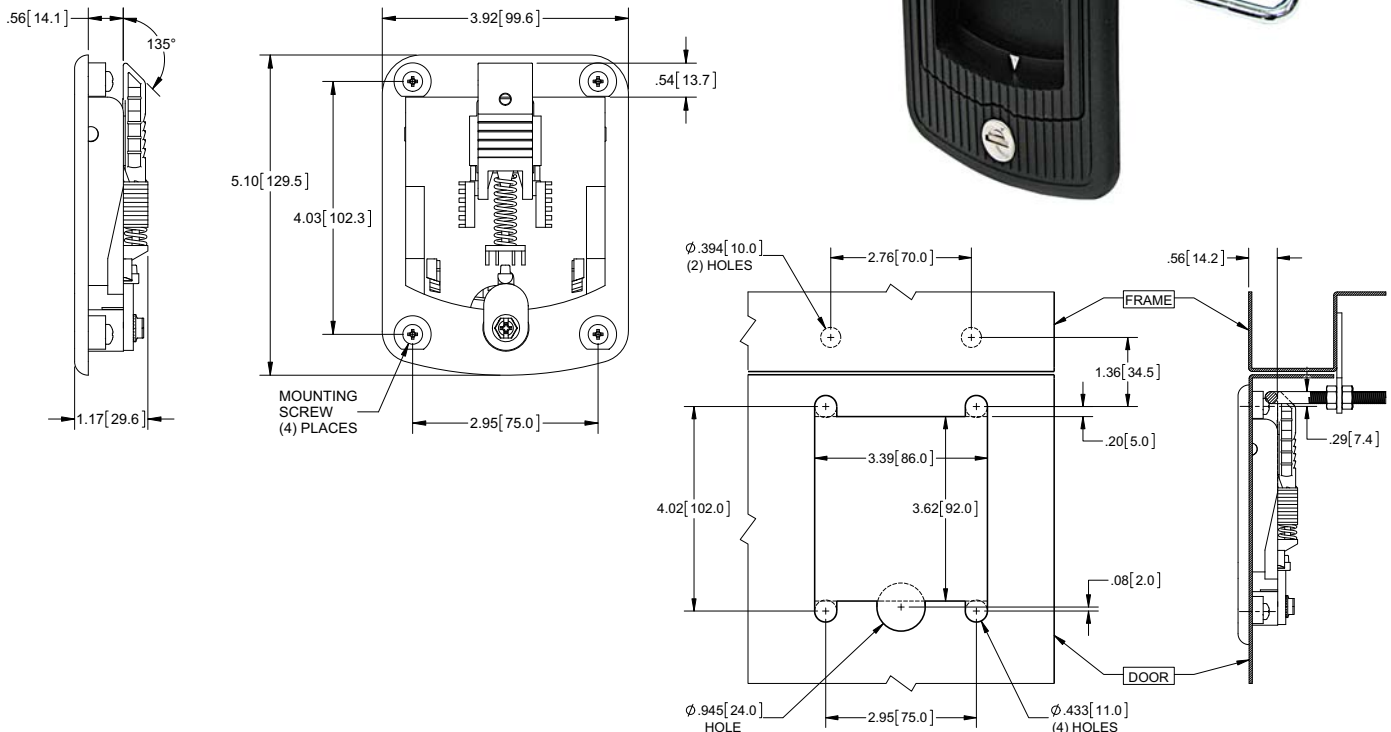
**NEW PRODUCT FAMILY**



## PLASTIC PADDLE HANDLE WITH KEEPER

| PART NUMBER | MATERIAL | CAM LOCK | MOUNTING HOLES |
|-------------|----------|----------|----------------|
| 468P        | Plastic  | Yes      | See Note       |

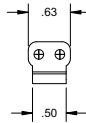
- Includes secondary release for additional security
- Handle mounts from the back with four mounting screws (included)



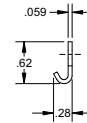
# NEW PART NUMBERS

## COMPRESSION SPRING DRAW LATCH - PADLOCK EYE

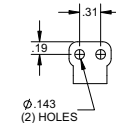
| PART NUMBER | DESCRIPTION           | MATERIAL        | FINISH     |
|-------------|-----------------------|-----------------|------------|
| 2032SS-K    | Keeper                | Stainless Steel | Passivated |
| 2032SS-K01  | Keeper                | 316SS           | Passivated |
| 2032SS-L    | Tab Up Latch          | Stainless Steel | Passivated |
| 2032SS      | Tab Up Latch & Keeper | Stainless Steel | Passivated |



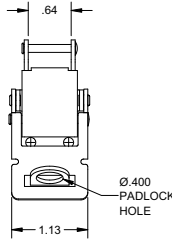
FRONT VIEW



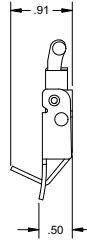
RIGHT SIDE VIEW



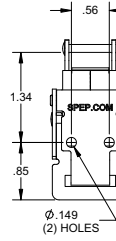
REAR VIEW



FRONT VIEW



RIGHT SIDE VIEW



REAR VIEW



HINGES,  
CONTINUOUS

HINGES,  
SPRING

HINGES,  
BUTT

HINGES,  
LIFT-OFF

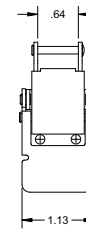
HINGES,  
WELD-ON

HINGES,  
STRAP & TEE

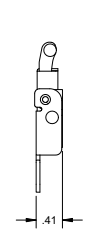
LATCHES,  
MULTI-POINT

## COMPRESSION SPRING DRAW LATCH - TAB STRAIGHT

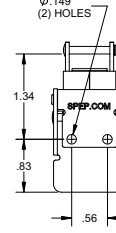
| PART NUMBER | DESCRIPTION        | MATERIAL        | FINISH     |
|-------------|--------------------|-----------------|------------|
| 2034SS-L    | Tab Straight Latch | Stainless Steel | Passivated |



FRONT VIEW



RIGHT SIDE VIEW



REAR VIEW



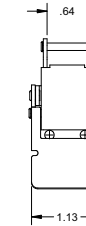
TIE DOWNS &  
DOOR  
HOLDERS

RV  
PRODUCTS

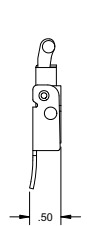
RUBBER  
PRODUCTS

## COMPRESSION SPRING DRAW LATCH - TAB UP

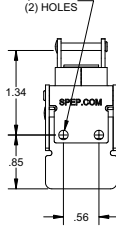
| PART NUMBER | DESCRIPTION  | MATERIAL        | FINISH     |
|-------------|--------------|-----------------|------------|
| 2035SS-L    | Tab Up Latch | Stainless Steel | Passivated |



FRONT VIEW



RIGHT SIDE VIEW



REAR VIEW



NEMA &  
JIC

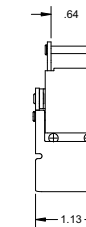
L & T  
HANDLES

LATCHES,  
RECESSED

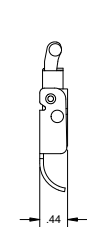
LATCHES,  
PAWL

## COMPRESSION SPRING DRAW LATCH - TAB DOWN

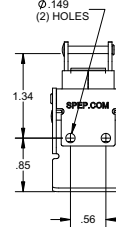
| PART NUMBER | DESCRIPTION    | MATERIAL        | FINISH     |
|-------------|----------------|-----------------|------------|
| 2036SS-L    | Tab Down Latch | Stainless Steel | Passivated |



FRONT VIEW



RIGHT SIDE VIEW



REAR VIEW



LATCHES,  
COMPRESSION

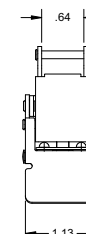
LATCHES,  
DRAW

LATCHES,  
BOLT

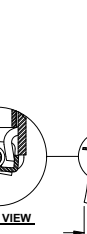
HASPS &  
STAPLES

## COMPRESSION SPRING DRAW LATCH - SAFETY CATCH

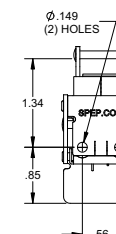
| PART NUMBER | DESCRIPTION    | MATERIAL        | FINISH     |
|-------------|----------------|-----------------|------------|
| 2033SS-L    | Tab Up Latch   | Stainless Steel | Passivated |
| 2033SS-L01  | Tab Up Latch   | 316SS           | Passivated |
| 2037SS-L    | Tab Down Latch | Stainless Steel | Passivated |



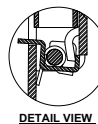
FRONT VIEW



RIGHT SIDE VIEW



REAR VIEW



DETAIL VIEW



PULLS &  
KNOBS

HANDLES,  
CHEST

CAM LOCKS &  
ACCESSORIES

MISC.  
PRODUCTS

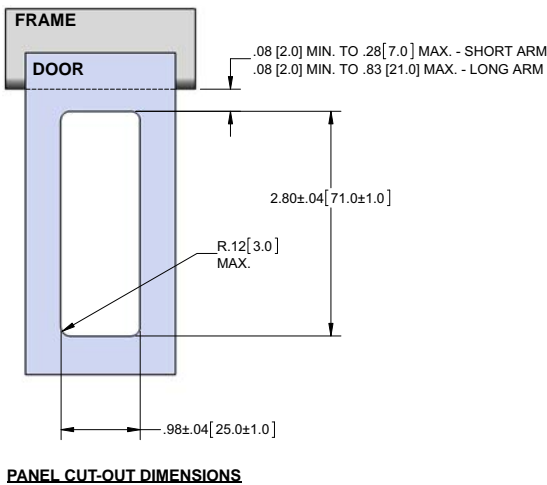
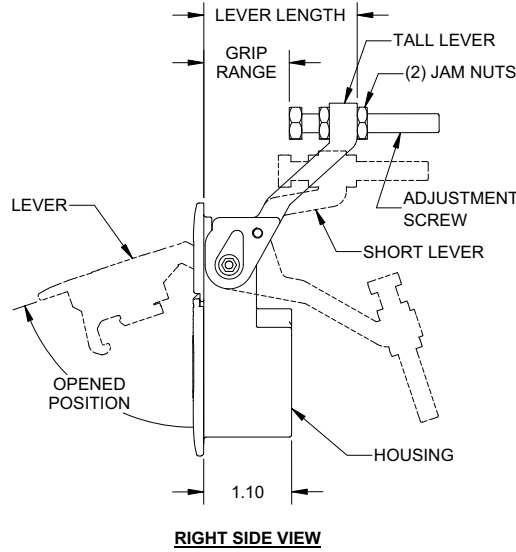
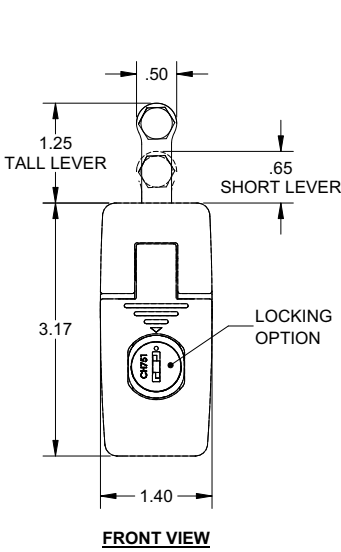
INDEX

# NEW PART NUMBERS

## SMALL COMPRESSION LEVER LATCH

- Die cast zinc
- Spring loaded lever
- Includes:
  - Gasket
  - (2) ringed keys
- Rated NEMA 4/IP-65
- Low profile
- Locking parts have a CH751 key code
- Jam nut can be positioned on opposite side of lever in order to achieve maximum grip range

**NEW  
PRODUCT  
FAMILY**

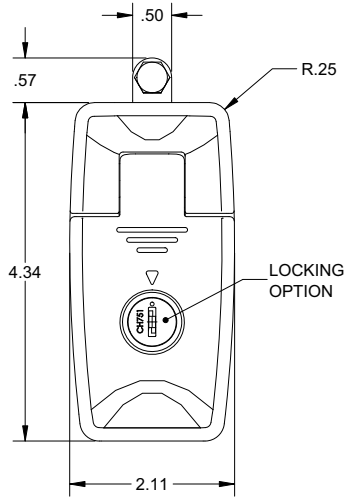


| GRIP RANGE                                              | DOOR THICKNESS  | MATTE BLACK | STYLE       |
|---------------------------------------------------------|-----------------|-------------|-------------|
| .04 [1.0] TO .98 [24.9]<br>(1.79 [45.4] LEVER LENGTH)   | .43 [11.0] MAX. | 9-15BK01    | Non-locking |
|                                                         |                 | 9-16BK01    | Locking     |
| .59 [15.0] TO 1.18 [30.0]<br>(1.92 [48.9] LEVER LENGTH) | .43 [11.0] MAX. | 9-15BK02    | Non-locking |
|                                                         |                 | 9-16BK02    | Locking     |

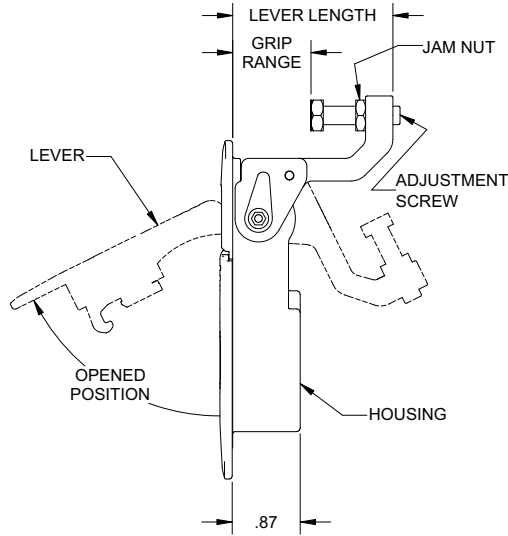
## LARGE COMPRESSION LEVER LATCH

- Die cast zinc
- Low profile
- Spring loaded lever
- Includes (2) ringed keys
- Optional gasket (part no. 9-1G)
- Rated NEMA 4/IP-65 when installed with optional gasket and supplied mounting screws
- (2) screws supplied for .83 to 1.61 door thickness parts
- Locking parts have a CH751 key code
- Jam nut can be positioned on opposite side of lever in order to achieve maximum grip range

**NEW PRODUCT FAMILY**



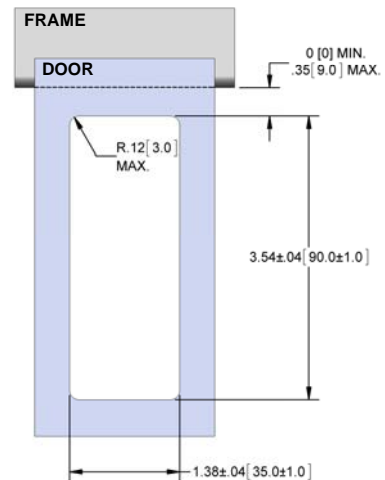
FRONT VIEW



RIGHT SIDE VIEW



| GRIP RANGE                                               | DOOR THICKNESS            | MATTE BLACK | STYLE       |
|----------------------------------------------------------|---------------------------|-------------|-------------|
| .04 [1.0] TO .55 [14.0]<br>(1.14 [28.9] LEVER LENGTH)    | .04 [1.0] to .43 [10.9]   | 9-10BK01    | Non-locking |
|                                                          |                           | 9-12BK01    | Locking     |
|                                                          | .43 [10.9] to .83 [21.1]  | 9-10BK02    | Non-locking |
|                                                          |                           | 9-12BK02    | Locking     |
|                                                          | .83 [21.1] to 1.61 [40.9] | 9-10BK03    | Non-locking |
|                                                          |                           | 9-12BK03    | Locking     |
| .55 [14.0] TO 1.14 [29.0]<br>(1.70 [44.0] LEVER LENGTH)  | .04 [1.0] to .43 [10.9]   | 9-10BK04    | Non-locking |
|                                                          |                           | 9-12BK04    | Locking     |
|                                                          | .43 [10.9] to .83 [21.1]  | 9-10BK05    | Non-locking |
|                                                          |                           | 9-12BK05    | Locking     |
|                                                          | .83 [21.1] to 1.61 [40.9] | 9-10BK06    | Non-locking |
|                                                          |                           | 9-12BK06    | Locking     |
| 1.14 [29.0] TO 1.77 [45.0]<br>(2.40 [60.0] LEVER LENGTH) | .04 [1.0] to .43 [10.9]   | 9-10BK07    | Non-locking |
|                                                          |                           | 9-12BK07    | Locking     |
|                                                          | .43 [10.9] to .83 [21.1]  | 9-10BK08    | Non-locking |
|                                                          |                           | 9-12BK08    | Locking     |
|                                                          | .83 [21.1] to 1.61 [40.9] | 9-10BK09    | Non-locking |
|                                                          |                           | 9-12BK09    | Locking     |
| 1.77 [45.0] TO 2.24 [57.0]<br>(2.80 [72.0] LEVER LENGTH) | .04 [1.0] to .43 [10.9]   | 9-10BK10    | Non-locking |
|                                                          |                           | 9-12BK10    | Locking     |
|                                                          | .43 [10.9] to .83 [21.1]  | 9-10BK11    | Non-locking |
|                                                          |                           | 9-12BK11    | Locking     |
|                                                          | .83 [21.1] to 1.61 [40.9] | 9-10BK12    | Non-locking |
|                                                          |                           | 9-12BK12    | Locking     |



PANEL CUT-OUT DIMENSIONS

- HINGES, CONTINUOUS
- HINGES, SPRING
- HINGES, BUTT
- HINGES, LIFT-OFF
- HINGES, WELD-ON
- HINGES, STRAP & TEE
- LATCHES, MULTI-POINT
- TIE DOWNS & DOOR HOLDERS
- RV PRODUCTS
- RUBBER PRODUCTS
- NEMA & JIC
- L & T HANDLES
- LATCHES, RECESSED
- LATCHES, PAWL
- LATCHES, COMPRESSION
- LATCHES, DRAW
- LATCHES, BOLT
- HASPS & STAPLES
- PULLS & KNOBS
- HANDLES, CHEST
- CAM LOCKS & ACCESSORIES
- MISC. PRODUCTS
- INDEX

# NEW PART NUMBERS

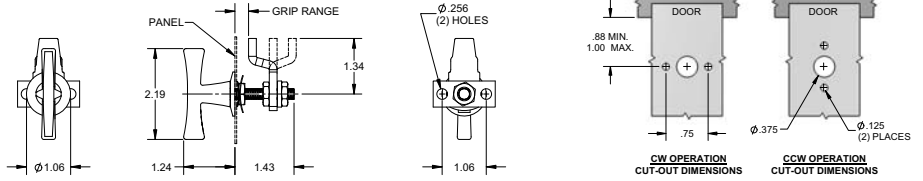
## SMALL THREE POINT ADJUSTABLE T-LATCH WITH STEEL CAM

| PART NUMBER | GRIP                                                 | CAM STYLE               | MATERIAL      | FINISH      |
|-------------|------------------------------------------------------|-------------------------|---------------|-------------|
| 16-1505     | .50 [12.7] - 1.00 [25.4]                             | Straight                | Die cast zinc | Zinc plated |
| 16-1506     | 0.00 [0.0] - .50 [12.7]<br>1.00 [25.4] - 1.50 [38.0] | Offset In<br>Offset Out |               |             |

**NEW PRODUCT FAMILY**



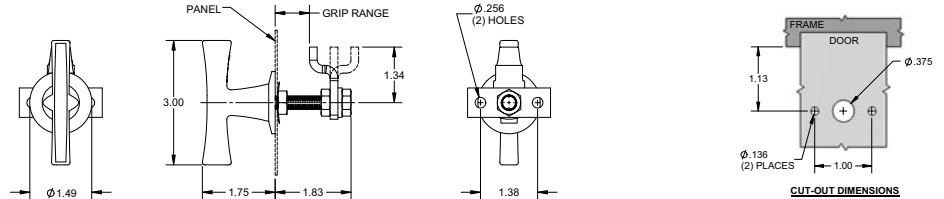
- Includes cam and cam fasteners



## MEDIUM THREE POINT ADJUSTABLE T-LATCH WITH STEEL CAM

| PART NUMBER | GRIP                                                | CAM STYLE               | MATERIAL      | FINISH      |
|-------------|-----------------------------------------------------|-------------------------|---------------|-------------|
| 16-2005     | .56 [14.3] - 1.28 [32.5]                            | Straight                | Die cast zinc | Zinc plated |
| 16-2006     | .06 [1.6] - .78 [19.8]<br>1.06 [27.0] - 1.78 [45.2] | Offset In<br>Offset Out |               |             |

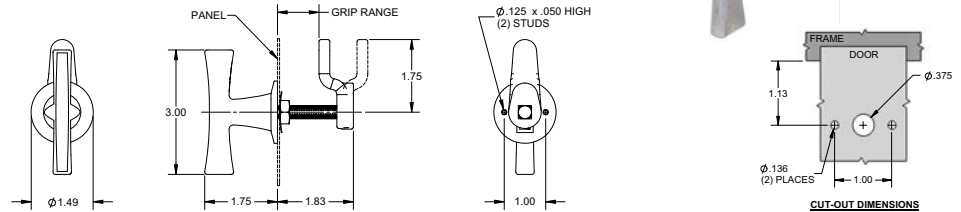
- Includes cam and cam fasteners



## MEDIUM SINGLE POINT ADJUSTABLE T-LATCH WITH DIE CAST ZINC CAM

| PART NUMBER | GRIP                                                 | CAM STYLE               | MATERIAL      | FINISH      |
|-------------|------------------------------------------------------|-------------------------|---------------|-------------|
| 16-25       | .13 [3.2] - 1.00 [25.4]<br>1.00 [25.4] - 2.00 [50.8] | Offset In<br>Offset Out | Die cast zinc | Zinc plated |

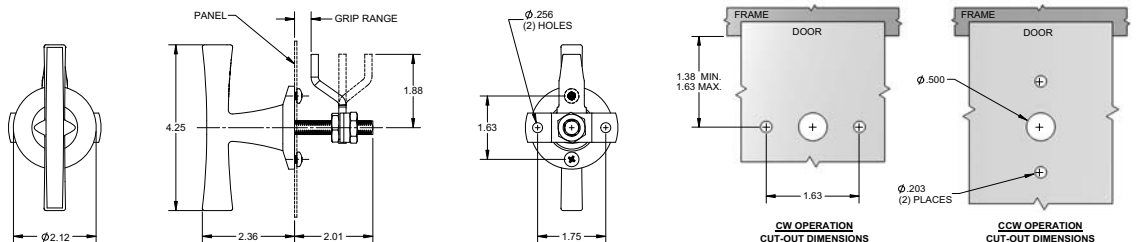
- Includes cam and cam fasteners



## LARGE THREE POINT ADJUSTABLE T-LATCH WITH STEEL CAM

| PART NUMBER | GRIP                                                | CAM STYLE               | MATERIAL      | FINISH      |
|-------------|-----------------------------------------------------|-------------------------|---------------|-------------|
| 16-3005     | .25 [6.4] - 1.50 [38.0]                             | Straight                | Die cast zinc | Zinc plated |
| 16-3006     | .00 [0.0] - .75 [19.0]<br>1.00 [25.4] - 2.25 [57.0] | Offset In<br>Offset Out |               |             |

- Includes cam, cam fasteners and mounting screws



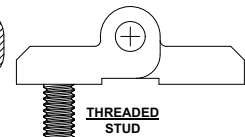
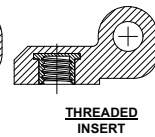
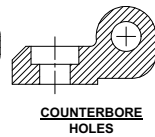
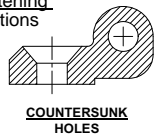
# NEW PART NUMBERS

## PLASTIC HINGES

- Includes stainless steel pins unless otherwise specified
- Some include threaded studs or/and inserts that are either brass or nickel plated steel

**NEW  
PRODUCT  
FAMILY**

Fastening  
Options



HINGES,  
CONTINUOUS

HINGES,  
SPRING

## HINGES

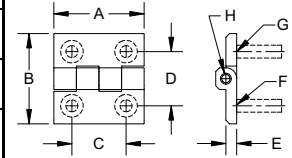
| PART NO.  | A           | B           | C           | D           | E         | F                                   | G                                   | H            | RADIAL WORKING LOAD (lb.) | AXIAL WORKING LOAD (lb.) |
|-----------|-------------|-------------|-------------|-------------|-----------|-------------------------------------|-------------------------------------|--------------|---------------------------|--------------------------|
| H3500P    | .98 [25.0]  | .98 [25.0]  | .59 [15.0]  | .59 [15.0]  | .12 [3.0] | M3 FASTENER COUNTERSINKS            | M3 FASTENER COUNTERSINKS            | Ø.118 [3.00] | 50                        | 40                       |
| H3501P    | .98 [25.0]  | 1.18 [30.0] | .59 [15.0]  | .71 [18.0]  | .12 [3.0] | M4 FASTENER COUNTERSINKS            | M4 FASTENER COUNTERSINKS            | Ø.118 [3.00] | 50                        | 35                       |
| H3502P    | 1.58 [40.0] | 1.58 [40.0] | .98 [25.0]  | .98 [25.0]  | .20 [5.0] | M5 FASTENER COUNTERSINKS            | M5 FASTENER COUNTERSINKS            | Ø.157 [4.00] | 120                       | 70                       |
| H3503P    | 1.97 [50.0] | 1.97 [50.0] | 1.18 [30.0] | 1.18 [30.0] | .24 [6.0] | M6 FASTENER COUNTERSINKS            | M6 FASTENER COUNTERSINKS            | Ø.236 [6.00] | 150                       | 90                       |
| H3503P-01 | 1.97 [50.0] | 1.97 [50.0] | 1.18 [30.0] | 1.18 [30.0] | .24 [6.0] | M6 x .59 [15.0] LONG THREADED STUDS | M6 x .59 [15.0] LONG THREADED STUDS | Ø.236 [6.00] | 150                       | 100                      |



HINGES,  
BUTT

HINGES,  
LIFT-OFF

HINGES,  
WELD-ON

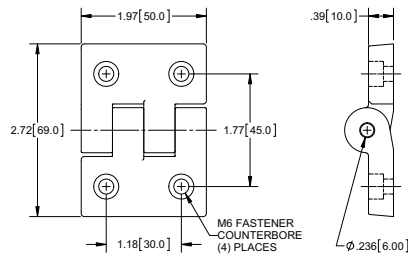


HINGES,  
STRAP & TEE

LATCHES,  
MULTI-POINT

## HINGE WITH COUNTER BORES

| PART NO. | RADIAL WORKING LOAD (lb.) | AXIAL WORKING LOAD (lb.) |
|----------|---------------------------|--------------------------|
| H3504P   | 200                       | 120                      |



TIE DOWNS &  
DOOR  
HOLDERS

RV  
PRODUCTS

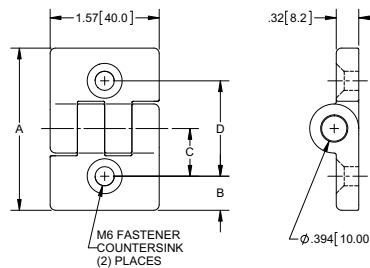
RUBBER  
PRODUCTS

NEMA &  
JIC

## HINGES

| PART NO. | A           | B          | C           | D           | RADIAL WORKING LOAD (lb.) | AXIAL WORKING LOAD (lb.) |
|----------|-------------|------------|-------------|-------------|---------------------------|--------------------------|
| H3512P   | 2.34 [59.5] | .49 [12.5] | .69 [17.5]  | 1.38 [35.0] | 150                       | 80                       |
| H3513P   | 2.58 [65.5] | .49 [12.5] | .67 [17.0]  | 1.57 [40.0] | 150                       | 65                       |
| H3514P   | 2.95 [75.0] | .51 [13.0] | .75 [19.0]  | 1.69 [43.0] | 150                       | 60                       |
| H3515P*  | 2.83 [72.0] | .51 [13.0] | .91 [23.0]  | 1.81 [46.0] | 150                       | 65                       |
| H3516P*  | 3.54 [90.0] | .78 [19.7] | 1.00 [25.3] | 1.99 [50.6] | 150                       | 60                       |
| H3517P   | 3.19 [81.0] | .51 [13.0] | .91 [23.0]  | 1.89 [48.0] | 150                       | 60                       |

NOTE: \*Part no. H3515P and H3516P have equal leaves



L & T  
HANDLES

LATCHES,  
RECESSED

LATCHES,  
PAWL

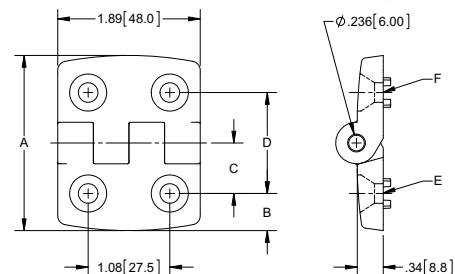
LATCHES,  
COMPRESSION

LATCHES,  
DRAW

## HINGES

| PART NO. | A           | B          | C          | D           | E                        | F                        | RADIAL WORKING LOAD (lb.) | AXIAL WORKING LOAD (lb.) |
|----------|-------------|------------|------------|-------------|--------------------------|--------------------------|---------------------------|--------------------------|
| H3518P*  | 1.69 [43.0] | .37 [9.5]  | .47 [12.0] | .95 [24.0]  | M4 FASTENER COUNTERSINKS | M4 FASTENER COUNTERSINKS | 200                       | 150                      |
| H3519P   | 2.01 [51.0] | .41 [10.4] | .47 [12.0] | 1.14 [29.0] | M4 FASTENER COUNTERSINKS | M6 FASTENER COUNTERSINKS | 200                       | 170                      |
| H3520P   | 2.32 [59.0] | .41 [10.4] | .47 [12.0] | 1.38 [35.0] | M4 FASTENER COUNTERSINKS | M6 FASTENER COUNTERSINKS | 200                       | 150                      |
| H3521P*  | 2.32 [59.0] | .49 [12.5] | .67 [17.0] | 1.34 [34.0] | M6 FASTENER COUNTERSINKS | M6 FASTENER COUNTERSINKS | 200                       | 170                      |
| H3522P   | 2.66 [67.5] | .49 [12.5] | .67 [17.0] | 1.57 [40.0] | M6 FASTENER COUNTERSINKS | M6 FASTENER COUNTERSINKS | 200                       | 150                      |
| H3523P*  | 2.91 [74.0] | .55 [14.0] | .91 [23.0] | 1.81 [46.0] | M6 FASTENER COUNTERSINKS | M6 FASTENER COUNTERSINKS | 200                       | 150                      |

NOTE: \*Part no. H3518P, H3521P and H3523P have equal leaves



LATCHES,  
BOLT

HASPS &  
STAPLES

PULLS &  
KNOBS

HANDLES,  
CHEST

CAM LOCKS &  
ACCESSORIES

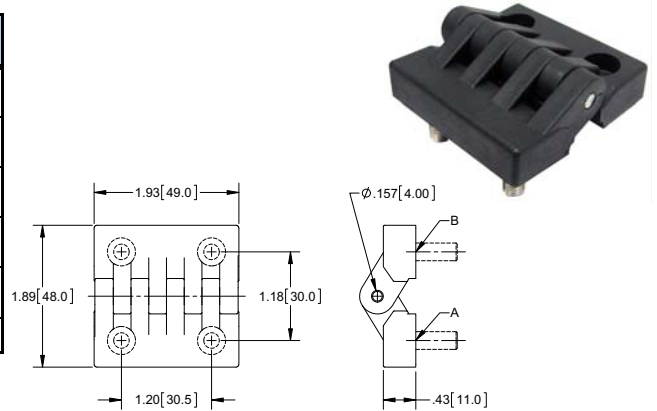
MISC.  
PRODUCTS

INDEX

# NEW PART NUMBERS

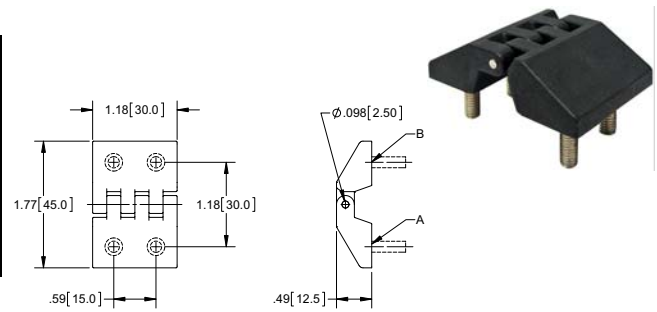
## HINGES

| PART NO.  | A                                   | B                                   | RADIAL WORKING LOAD (lb.) | AXIAL WORKING LOAD (lb.) |
|-----------|-------------------------------------|-------------------------------------|---------------------------|--------------------------|
| H3511P    | M5 FASTENER COUNTERBORES            | M5 FASTENER COUNTERBORES            | 250                       | 150                      |
| H3511P-01 | M6 x .55 [14.0] LONG THREADED STUDS | M6 x .55 [14.0] LONG THREADED STUDS | 250                       | 150                      |
| H3511P-02 | M6 THREADED INSERTS                 | M6 x .55 [14.0] LONG THREADED STUDS | 250                       | 150                      |
| H3511P-03 | M5 FASTENER COUNTERBORES            | M6 x .55 [14.0] LONG THREADED STUDS | 250                       | 150                      |
| H3511P-04 | M5 FASTENER COUNTERBORES            | M6 THREADED INSERTS                 | 250                       | 150                      |
| H3511P-05 | M6 THREADED INSERTS                 | M6 THREADED INSERTS                 | 250                       | 150                      |



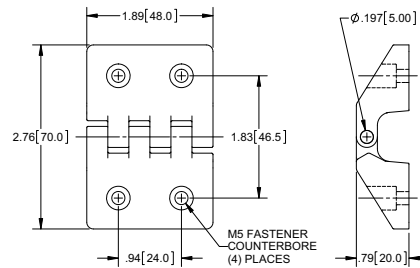
## BEVELED HINGES

| PART NO.  | A                                   | B                                   | RADIAL WORKING LOAD (lb.) | AXIAL WORKING LOAD (lb.) |
|-----------|-------------------------------------|-------------------------------------|---------------------------|--------------------------|
| H3506P    | M4 FASTENER COUNTERBORES            | M4 FASTENER COUNTERBORES            | 100                       | 100                      |
| H3506P-01 | M4 x .47 [12.0] LONG THREADED STUDS | M4 x .47 [12.0] LONG THREADED STUDS | 100                       | 100                      |
| H3506P-03 | M4 FASTENER COUNTERBORES            | M4 x .47 [12.0] LONG THREADED STUDS | 100                       | 100                      |
| H3506P-05 | M4 THREADED INSERTS                 | M4 THREADED INSERTS                 | 100                       | 100                      |



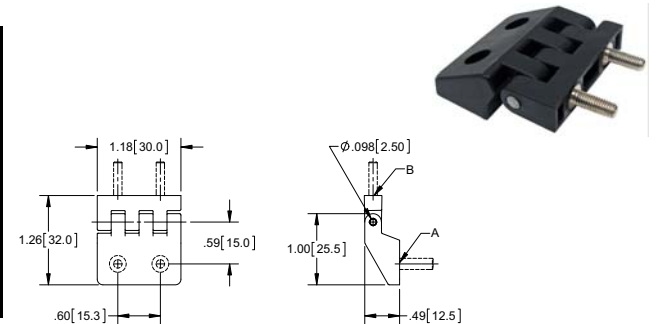
## BEVELED HINGE WITH COUNTER BORES

| PART NO. | RADIAL WORKING LOAD (lb.) | AXIAL WORKING LOAD (lb.) |
|----------|---------------------------|--------------------------|
| H3507P   | 200                       | 100                      |



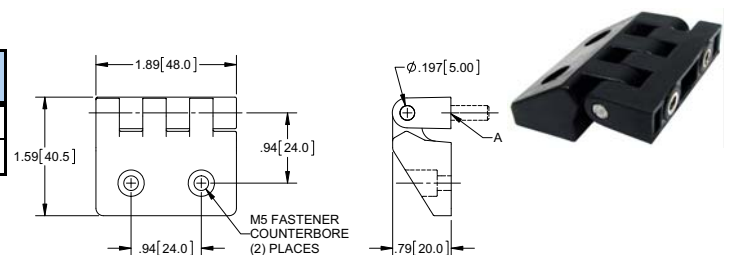
## PARTIAL BEVELED HINGES

| PART NO.  | A                                   | B                                   | RADIAL WORKING LOAD (lb.) | AXIAL WORKING LOAD (lb.) |
|-----------|-------------------------------------|-------------------------------------|---------------------------|--------------------------|
| H3505P-01 | M4 x .47 [12.0] LONG THREADED STUDS | M3 x .47 [12.0] LONG THREADED STUDS | 100                       | 100                      |
| H3505P-02 | M4 THREADED INSERTS                 | M3 x .47 [12.0] LONG THREADED STUDS | 100                       | 100                      |
| H3505P-03 | M4 FASTENER COUNTERBORES            | M3 x .47 [12.0] LONG THREADED STUDS | 100                       | 100                      |
| H3505P-04 | M4 FASTENER COUNTERBORES            | M3 THREADED INSERTS                 | 100                       | 100                      |
| H3505P-05 | M4 THREADED INSERTS                 | M3 THREADED INSERTS                 | 100                       | 100                      |



## PARTIAL BEVELED HINGES

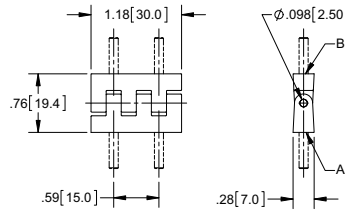
| PART NO. | A                                   | RADIAL WORKING LOAD (lb.) | AXIAL WORKING LOAD (lb.) |
|----------|-------------------------------------|---------------------------|--------------------------|
| H3508-03 | M5 x .51 [13.0] LONG THREADED STUDS | 200                       | 100                      |
| H3508-04 | M5 FASTENER INSERTS                 | 200                       | 100                      |



# NEW PART NUMBERS

## 90° ANGLE HINGES

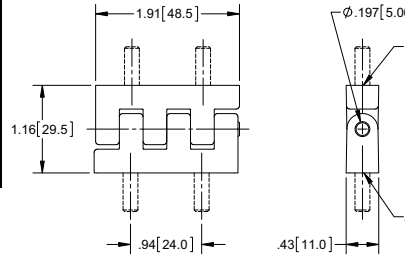
| PART NO.  | A                                   | B                                   | RADIAL WORKING LOAD (lb.) | AXIAL WORKING LOAD (lb.) |
|-----------|-------------------------------------|-------------------------------------|---------------------------|--------------------------|
| H3509P-01 | M3 x .47 [12.0] LONG THREADED STUDS | M3 x .47 [12.0] LONG THREADED STUDS | 100                       | 100                      |
| H3509P-02 | M3 FASTENER INSERTS                 | M3 x .47 [12.0] LONG THREADED STUDS | 100                       | 100                      |
| H3509P-05 | M3 FASTENER INSERTS                 | M3 FASTENER INSERTS                 | 100                       | 100                      |



HINGES, CONTINUOUS  
HINGES, SPRING  
HINGES, BUTT  
HINGES, LIFT-OFF

## 90° ANGLE HINGES

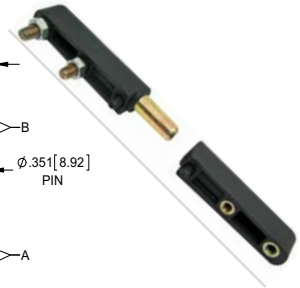
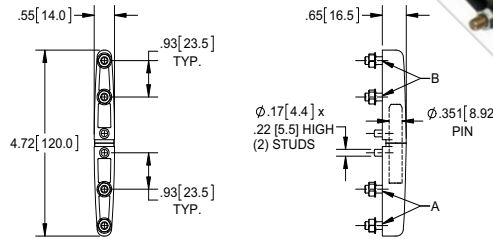
| PART NO.  | A                                   | B                                   | RADIAL WORKING LOAD (lb.) | AXIAL WORKING LOAD (lb.) |
|-----------|-------------------------------------|-------------------------------------|---------------------------|--------------------------|
| H3510P-01 | M5 x .51 [13.0] LONG THREADED STUDS | M5 x .51 [13.0] LONG THREADED STUDS | 200                       | 200                      |
| H3510P-02 | M5 THREADED INSERTS                 | M5 x .51 [13.0] LONG THREADED STUDS | 200                       | 200                      |
| H3510P-03 | M5 THREADED INSERTS                 | M5 THREADED INSERTS                 | 200                       | 200                      |



HINGES, WELD-ON  
HINGES, STRAP & TEE  
LATCHES, MULTI-POINT  
TIE DOWNS & DOOR HOLDERS

## IN-LINE HINGES

| PART NO. | A                                   | B                                   | RADIAL WORKING LOAD (lb.) | AXIAL WORKING LOAD (lb.) |
|----------|-------------------------------------|-------------------------------------|---------------------------|--------------------------|
| H3526P   | M5 x .47 [12.0] LONG THREADED STUDS | M5 x .47 [12.0] LONG THREADED STUDS | 200                       | 110                      |
| H3527P   | M5 THREADED INSERTS                 | M5 THREADED INSERTS                 | 200                       | 110                      |
| H3528P   | M5 THREADED INSERTS                 | M5 x .47 [12.0] LONG THREADED STUDS | 200                       | 110                      |



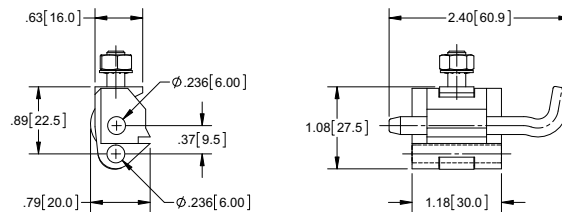
- Steel pin with yellow zinc plated finish

RV PRODUCTS  
RUBBER PRODUCTS  
NEMA & JIC  
L & T HANDLES  
LATCHES, RECESSED

## TAKE-APART HINGE

| PART NO. | RADIAL WORKING LOAD (lb.) | AXIAL WORKING LOAD (lb.) |
|----------|---------------------------|--------------------------|
| H3530P   | 150                       | 25                       |

- Steel pin with yellow zinc plated finish

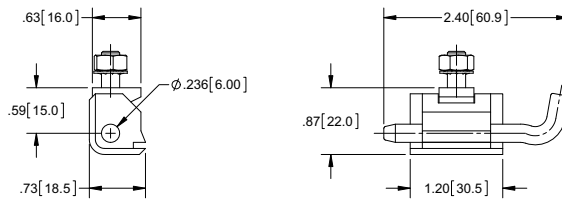


LATCHES, PAWL  
LATCHES, COMPRESSION  
LATCHES, DRAW  
LATCHES, BOLT

## TAKE-APART HINGE

| PART NO. | RADIAL WORKING LOAD (lb.) | AXIAL WORKING LOAD (lb.) |
|----------|---------------------------|--------------------------|
| H3531P   | 120                       | 150                      |

- Steel pin with yellow zinc plated finish

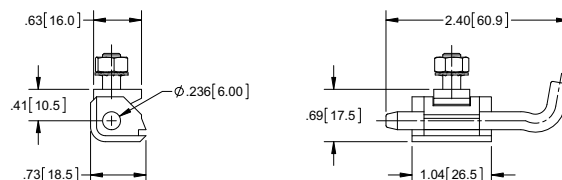


HASPS & STAPLES  
PULLS & KNOBS  
HANDLES, CHEST

## TAKE-APART HINGE

| PART NO. | RADIAL WORKING LOAD (lb.) | AXIAL WORKING LOAD (lb.) |
|----------|---------------------------|--------------------------|
| H3532P   | 120                       | 150                      |

- Steel pin with yellow zinc plated finish



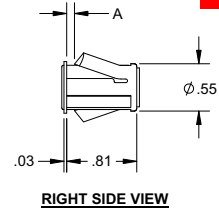
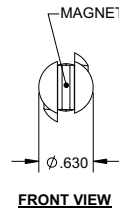
CAM LOCKS & ACCESSORIES  
MISC. PRODUCTS  
INDEX

# NEW PART NUMBERS

## SMALL SNAP-IN MAGNETIC CATCH

| PART NUMBER | A           | PANEL THICKNESS (MIN. - MAX.) |
|-------------|-------------|-------------------------------|
| D393BK      | .030 [.80]  | .020 [.50] - .080 [2.00]      |
| D393BK-01   | .090 [2.30] | .080 [2.00] - .140 [3.50]     |
| D393BK-02   | .150 [3.80] | .140 [3.50] - .200 [5.00]     |

- Black polypropylene housing
- Steel, zinc plated magnet end plates



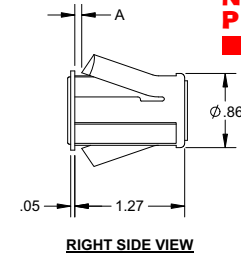
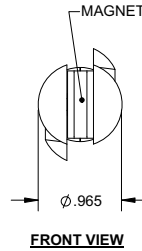
**NEW PRODUCT FAMILY**



## LARGE SNAP-IN MAGNETIC CATCH

| PART NUMBER | A           | PANEL THICKNESS (MIN. - MAX.) |
|-------------|-------------|-------------------------------|
| D394BK      | .020 [.50]  | .020 [.50] - .080 [2.00]      |
| D394BK-01   | .080 [2.00] | .080 [2.00] - .140 [3.50]     |
| D394BK-02   | .140 [3.50] | .140 [3.50] - .200 [5.00]     |

- Black polypropylene housing
- Steel, zinc plated magnet end plates



**NEW PRODUCT FAMILY**



## LARGE COMPRESSION PULL DOWN CATCH

| PART NUMBER |        | MATERIAL | FINISH      |
|-------------|--------|----------|-------------|
| 2141ZN-L    | Latch  | Steel    | Zinc Plated |
| 2141SS-L    | Latch  | 304SS    | Passivated  |
| 2141ZN-K    | Keeper | Steel    | Zinc Plated |
| 2141SS-K    | Keeper | 304SS    | Passivated  |

**NEW PRODUCT FAMILY**

